

LELIEVRE

PARIS

JOSSELIN - BLEU

1552-09



Inspired by 18th century silk fabrics. Druggets, their grounds rendered in repeated units of unusual geometric motifs formed by lines, some horizontal, some at an angle, sometimes crisscrossing, appeared in the mid 18th century. These fabrics, produced using different techniques, druggets with borders or worked druggets, with gold or silver thread and even woollen druggets, always have a small motif. They were mainly used for gowns, men's waistcoats or suits and, much later, for furnishings.

Collection	PATRIMOINE
------------	------------

Brand	TASSINARI & CHATEL
-------	--------------------

TECHNICAL DATA

Type	Damasks & Lampas
------	------------------

Composition	Silk 100%
-------------	-----------

Width	130 cm
-------	--------

Repeat cut	No
------------	----

Half drop match	No
-----------------	----

Care	  
------	---

Uses	   
------	---

Weight / Linear metre	200 g
-----------------------	-------

LELIEVRE

PARIS



Available colours



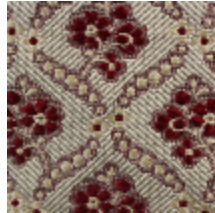
1552-09
JOSELIN - BLEU



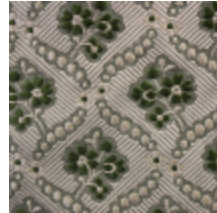
1552-10
**JOSELIN -
CORAIL**



1552-11
JOSELIN - OR



1552-12
**JOSELIN -
ROUGE**



1552-13
JOSELIN - VERT

JOSSELIN - BLEU

1552-09

