

MARIE ANTOINETTE - BLEU

1553-01



A lampas rewoven, from a design in the billiard room in Marie-Antoinette's small apartments in the Chateau of Versailles, a brocade of many coloured silks and chenille on white satin ground forming ornate medallions. This fabric was designed by Gondoin and ordered in around 1779 for the winter furniture of Marie-Antoinette's private rooms at the Chateau de Versailles. It was copied during the Second Empire around 1859 for the apartments of Empress Eugénie in the Palais des Tuileries.

Collection	PATRIMOINE
------------	------------

Brand	TASSINARI & CHATEL
-------	--------------------

TECHNICAL DATA

Composition	Silk 100%
-------------	-----------

Width	130 cm
-------	--------

Repeat cut	Yes
------------	-----

Vertical repeat	53 cm
-----------------	-------

Horizontal repeat	64 cm
-------------------	-------

Drop match	No
------------	----

Care	   
------	---

Uses	   
------	---

Weight / Linear metre	395 g
-----------------------	-------

LELIEVRE

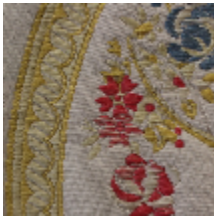
PARIS



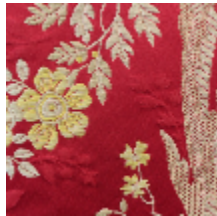
Available colours



1553-01
**MARIE
ANTOINETTE -
BLEU**



1553-02
**MARIE
ANTOINETTE -
CREME**



1553-04
**MARIE
ANTOINETTE -
ROUGE**

MARIE ANTOINETTE - BLEU

1553-01

