

LELIEVRE

PARIS

DIANE - BOUGIE *

1555-01



A very beautiful Louis XV lampas with a roses and foliage design. A delicate floral pattern of undulating rivers very fashionable during this period. This composition is an exact reproduction of the design in our archives. It is a multi-coloured broche.

Collection **PATRIMOINE**

Brand **TASSINARI & CHATEL**

TECHNICAL DATA

Composition **Silk 100%**

Width **130 cm**

Repeat cut **No**

Vertical repeat **28 cm**

Drop match **No**

Care 

Uses 

Weight / Linear metre **285 g**

LELIEVRE

PARIS



Available colours



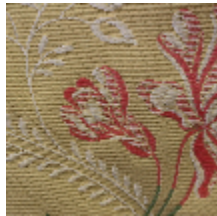
1555-01

DIANE - BOUGIE *



1555-02

DIANE - CORAIL *



1555-03

**DIANE -
JONQUILLE ***



1555-04

**DIANE - NATTIER

DIANE - BOUGIE *

1555-01

