

## LES GRENADES – CRAMOISI

1560-01



The new Tassinari & Chatel design is taken from their archives, it's of the Renaissance style created around 1880. A composition inspired by the Orient, imagined around a stylized pomegranate motif, surrounded by a mandala of small flowers. While the archive is a chiseled velvet, the LES GRENADES fabric presented in 2023 is a 100% silk lampas available in four colours: a typical crimson, illuminated by a light blue thread - a deep garnet colourway - a sapphire blue combined with beige and purple - and a gold, in several golden tones, very prevalent in the Renaissance period.

Collection	PATRIMOINE
------------	------------

Brand	TASSINARI & CHATEL
-------	--------------------

## TECHNICAL DATA

Composition	Silk 100%
-------------	-----------

Width	141 cm
-------	--------

Repeat cut	No
------------	----

Vertical repeat	32 cm
-----------------	-------

Horizontal repeat	18 cm
-------------------	-------

Drop match	No
------------	----

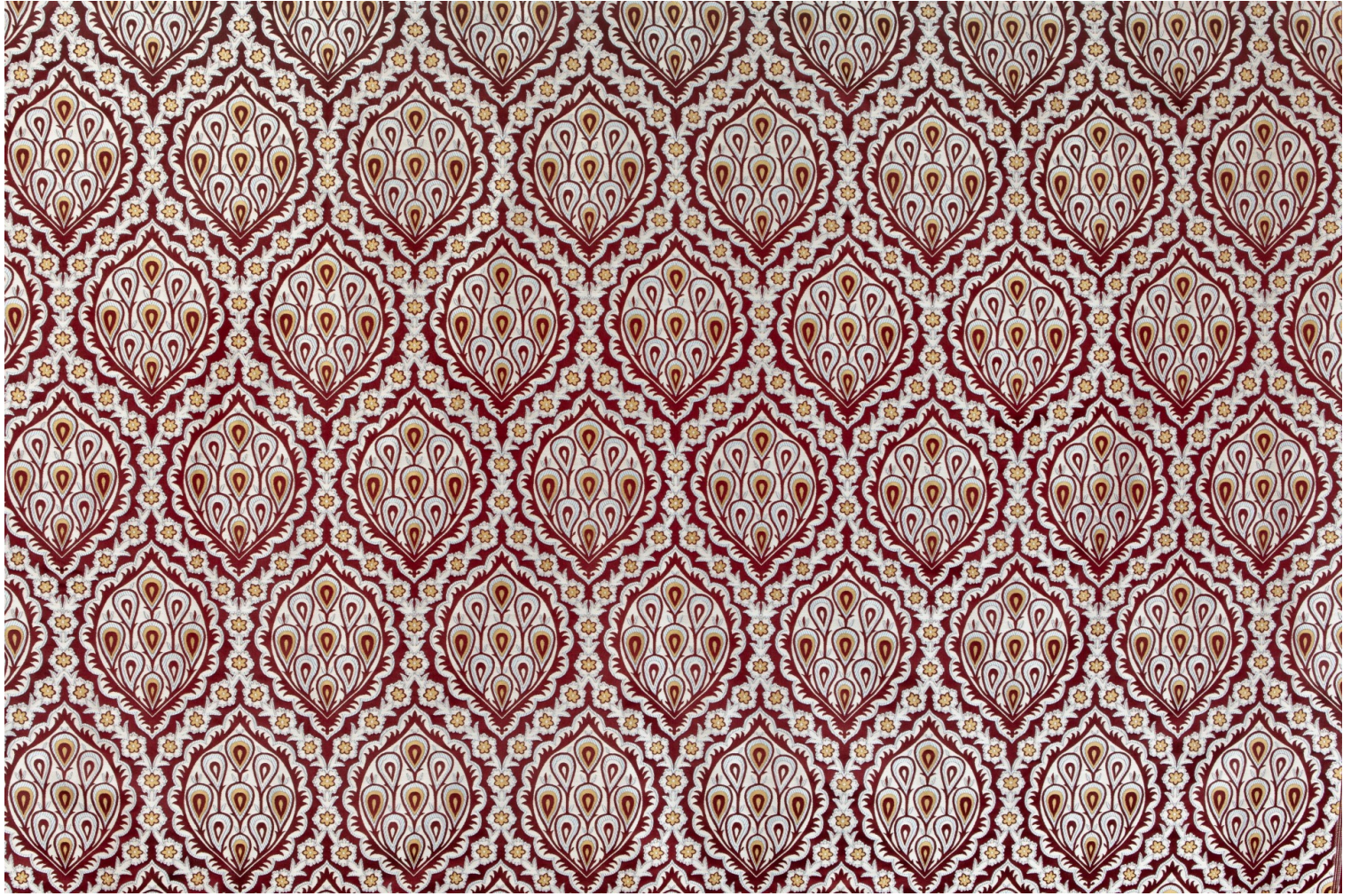
Care	   
------	---

Uses	   
------	---

Weight / Linear metre	390 g
-----------------------	-------

# LELIEVRE

PARIS



## Available colours



1560-01  
**LES GRENADES -  
CRAMOISI**



1560-02  
**LES GRENADES -  
GRENAT**



1560-03  
**LES GRENADES -  
SAPHIR**



1560-04  
**LES GRENADES -  
DORE**

**LES GRENADES - CRAMOISI**

1560-01

