

# LELIEVRE

PARIS

## MURAT S&D - CREME

1562-02



Empire panel woven to the design created at the beginning of the 19th century for Mademoiselle Mars, a famous actress. This fabric was also rewoven for the Palais de la Légion d'Honneur in Paris and Palais Beauharnais.

Collection **PATRIMOINE**

Brand **TASSINARI & CHATEL**

### TECHNICAL DATA

Composition **Silk 100%**

Width **65 cm**

Repeat cut **Yes**

Vertical repeat **171 cm**

Drop match **No**

Care 

Uses 

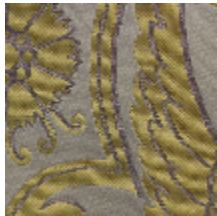
Weight / Linear metre **240 g**

# LELIEVRE

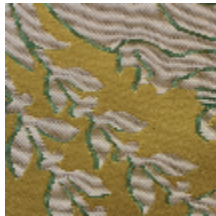
PARIS



## Available colours



1562-02  
**MURAT S&D -  
CREME**



1562-03  
**MURAT S&D -  
JAUNE**



1562-04  
**MURAT S&D -  
ROUGE**



1562-06  
**MURAT S&D -  
FAIENCE**



1562-07  
**MURAT S&D -  
MYRTE**

# LELIEVRE

PARIS

## MURAT S&D - CREME

1562-02

