

LELIEVRE

PARIS

MURAT S&D - MYRTE

1562-07



Empire panel woven to the design created at the beginning of the 19th century for Mademoiselle Mars, a famous actress. This fabric was also rewoven for the Palais de la Légion d&

Collection	PATRIMOINE
------------	------------

Brand	TASSINARI & CHATEL
-------	--------------------

TECHNICAL DATA

Composition	Silk 100%
-------------	-----------

Width	65 cm
-------	-------

Repeat cut	Yes
------------	-----

Vertical repeat	171 cm
-----------------	--------

Drop match	No
------------	----

Care	   
------	---

Uses	   
------	---

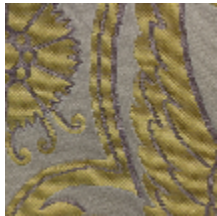
Weight / Linear metre	240 g
-----------------------	-------

LELIEVRE

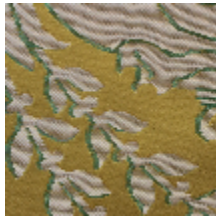
PARIS



Available colours



1562-02
**MURAT S&D -
CREME**



1562-03
**MURAT S&D -
JAUNE**



1562-04
**MURAT S&D -
ROUGE**



1562-06
**MURAT S&D -
FAIENCE**



1562-07
**MURAT S&D -
MYRTE**

LELIEVRE

PARIS

MURAT S&D - MYRTE

1562-07

