

MURAT BORDURE - CREME

1563-02



A typically empire style design of stripes composed of leaves and rosettes which can be used to complement the seat and back design Murat on the sides of cushions. It can equally be used on its own as a stripe or as a border on the « seme » background or plain satin for curtains.

Collection	PATRIMOINE
------------	------------

Brand	TASSINARI & CHATEL
-------	--------------------

TECHNICAL DATA


Composition	Silk 100%
-------------	-----------

Width	130 cm
-------	--------

Repeat cut	No
------------	----

Vertical repeat	30 cm
-----------------	-------

Drop match	No
------------	----

Care	   
------	---

Uses	   
------	---

Weight / Linear metre	280 g
-----------------------	-------

LELIEVRE

PARIS

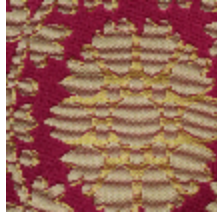
Available colours



1563-02
MURAT BORDURE
- CREME



1563-03
MURAT BORDURE
- JAUNE



1563-04
MURAT BORDURE
- ROUGE



1563-06
MURAT BORDURE
- FAIENCE



1563-07
MURAT BORDURE
- MYRTE

MURAT BORDURE - CREME

1563-02

