

**MURAT SEME - CREME**

1564-02



Background to the seat and back lampas Murat (Ref.1562) made up of little rosettes it can be used for upholstery with or without the Murat panel, or as curtains which can be further enhanced by the use of the Murat (Ref.1562) or Lannes borders.

---

Collection	PATRIMOINE
------------	------------

---

Brand	TASSINARI & CHATEL
-------	--------------------

---

## TECHNICAL DATA

---

Composition	Silk 100%
-------------	-----------

---

Width	130 cm
-------	--------

---

Repeat cut	No
------------	----

---

Vertical repeat	10 cm
-----------------	-------

---

Drop match	No
------------	----

---

Care	   
------	---

---

Uses	   
------	---

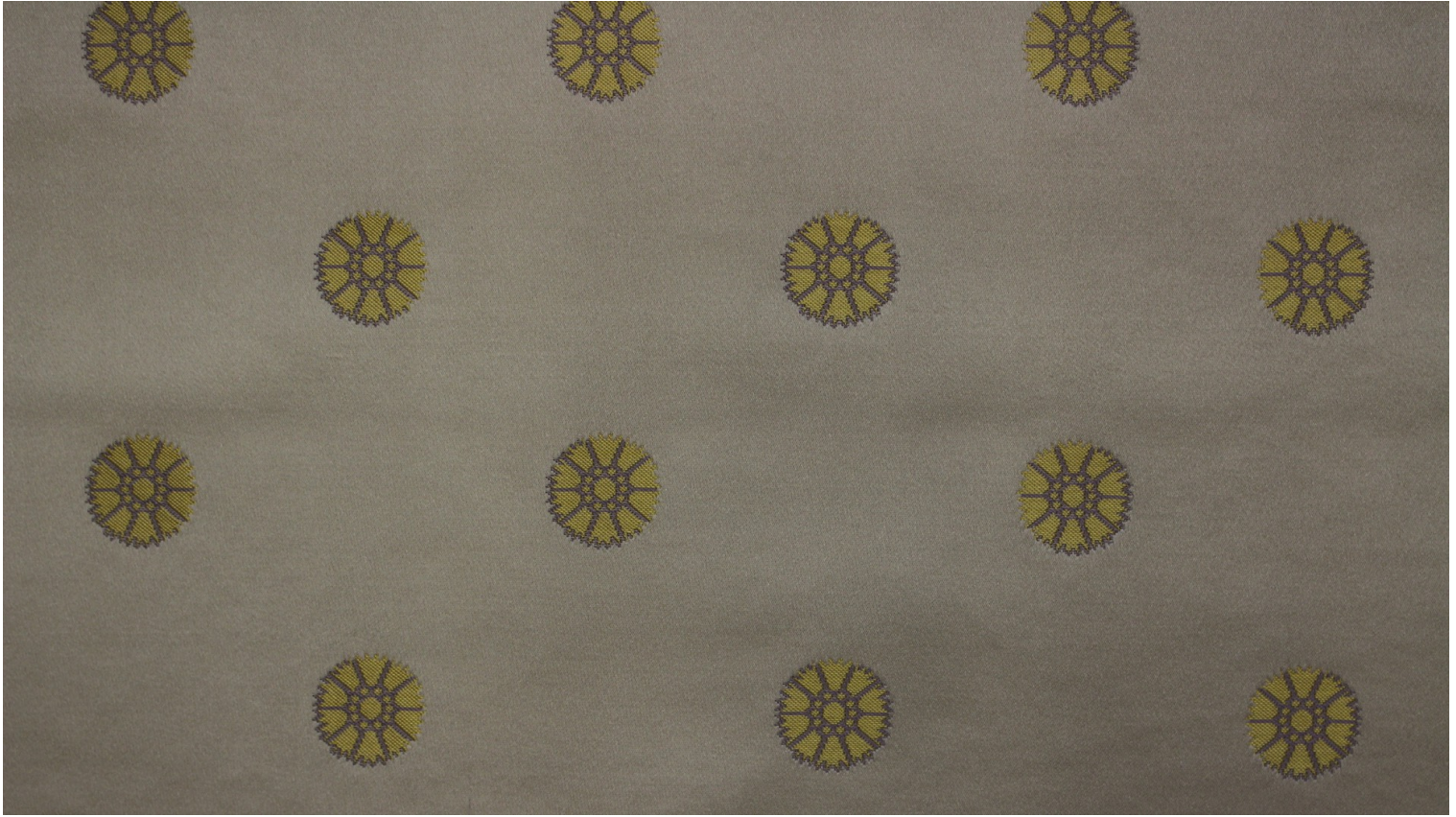
---

Weight / Linear metre	280 g
-----------------------	-------

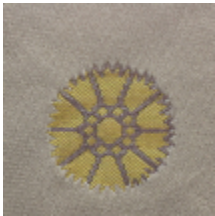
---

# LELIEVRE

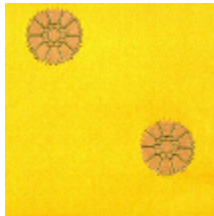
PARIS



## Available colours



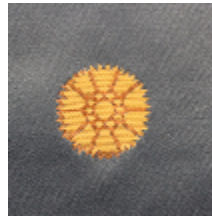
1564-02  
**MURAT SEME -  
CREME**



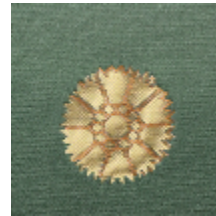
1564-03  
**MURAT SEME -  
JAUNE**



1564-04  
**MURAT SEME -  
ROUGE**



1564-06  
**MURAT SEME -  
FAIENCE**



1564-07  
**MURAT SEME -  
MYRTE**



**MURAT SEME - CREME**

1564-02

