

LANNES BORDURE - CREME

1572-02



Flowing stripes of laurel leaves with flowers, and acanthus leaves. Based on the border of the walling fabric designed by Camille Pernet in Lyon for the First Consul's Library Room in the Palais de Saint Cloud.

Collection	PATRIMOINE
------------	------------

Brand	TASSINARI & CHATEL
-------	--------------------

TECHNICAL DATA

Composition	Silk 100%
-------------	-----------


Width	130 cm
-------	--------

Repeat cut	No
------------	----

Vertical repeat	35 cm
-----------------	-------

Drop match	No
------------	----

Care	   
------	---

Uses	   
------	---

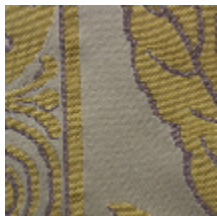
Weight / Linear metre	280 g
-----------------------	-------

LELIEVRE

PARIS



Available colours



1572-02
LANNES
BORDURE -
CREME



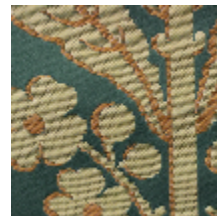
1572-03
LANNES
BORDURE -
JAUNE *



1572-04
LANNES
BORDURE -
ROUGE



1572-06
LANNES
BORDURE -
FAIENCE



1572-07
LANNES
BORDURE -
MYRTE *

LANNES BORDURE - CREME

1572-02

