

# LELIEVRE

PARIS

## PAIVA - NATTIER \*

1573-01



Thérèse LACHMAN had a town house built and decorated by the architect MANGUIN at 25 avenue des Champs Elysées. It is one of the most famous examples of a style referred to as "Cocotte" (French for "tart") and Napoleon III would have attended some of the parties held there. The PAIVA lampas in the "Patrimoine" collection was executed according to an original Tassinari & Chatel archive. A Renaissance inspired design of extravagant flowers, linked by fine twisting stems with leaves, on a geometric background.

---

Collection	PATRIMOINE
------------	------------

---

Brand	TASSINARI & CHATEL
-------	--------------------

---

### TECHNICAL DATA

---

Composition	Silk 57% - Cotton 43%
-------------	-----------------------

---

Width	130 cm
-------	--------

---

Repeat cut	No
------------	----

---

Vertical repeat	85 cm
-----------------	-------

---

Drop match	No
------------	----

---

Care	   
------	---

---

Uses	   
------	---

---

Weight / Linear metre	320 g
-----------------------	-------

---

# LELIEVRE

PARIS



## Available colours

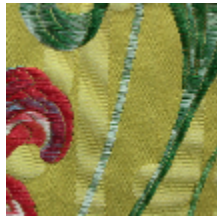


1573-01  
**PAIVA - NATTIER**

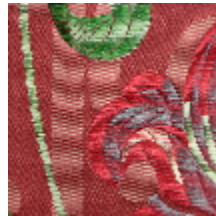
\*



1573-02  
**PAIVA - BIS**



1573-03  
**PAIVA - JAUNE \***



1573-04  
**PAIVA - RUBIS \***



1573-06  
**PAIVA - TAUPE  
FONCE \***



1573-07  
**PAIVA - NOIR**

# LELIEVRE

PARIS

## PAIVA - NATTIER \*

1573-01

