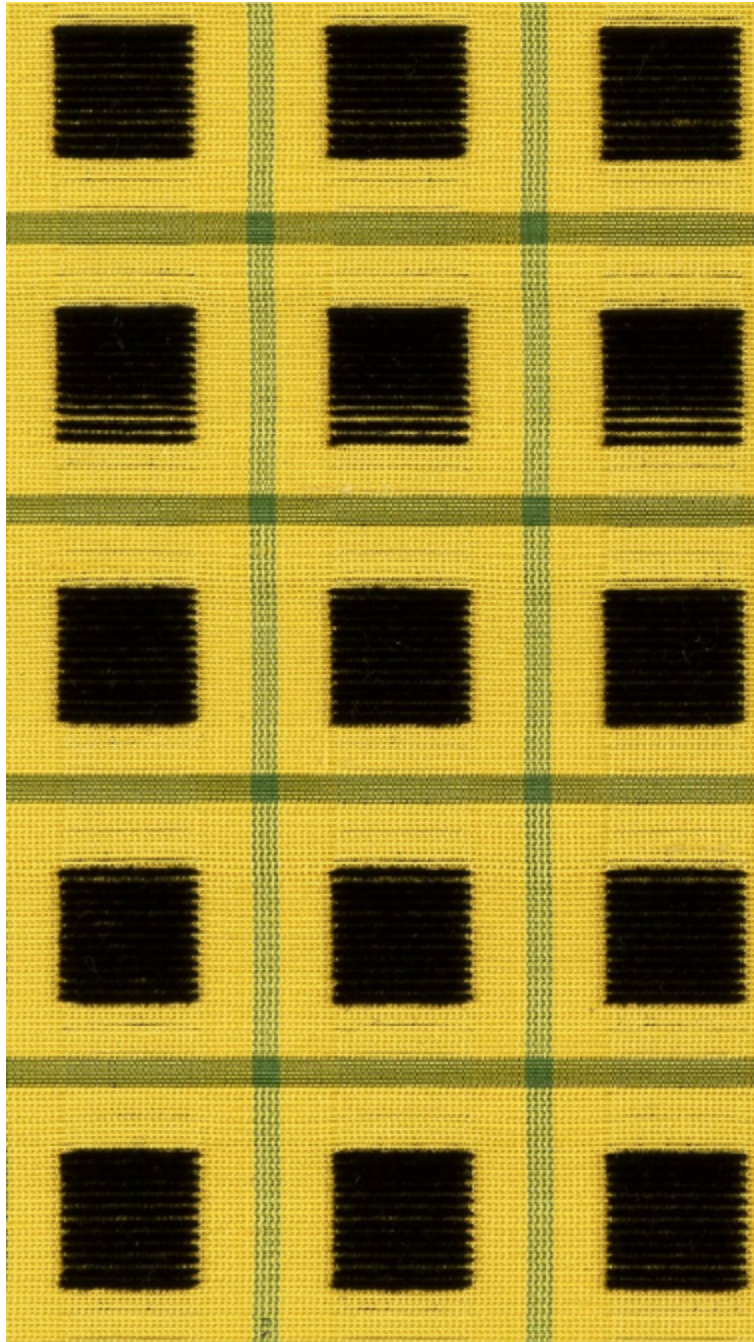


## CHARTRES - NOIR

1577-04



A cut velvet (100% Silk) on a Gros-de-Tours background, an open check design framing small squares of silk velvet. Velvet has always been greatly valued, not only for its sheen but also for its pleasing "soft as velvet" feel. In the 16th century in Italy, in Venice and especially Genoa, the artisans began to weave figured velvets. In the 17th century a silk weaver from Lyon introduced the manufacture of figured velvets into France.

Collection	PATRIMOINE
------------	------------

Brand	TASSINARI & CHATEL
-------	--------------------

### TECHNICAL DATA


Type	Hand weaving
------	--------------

Composition	Silk 100%
-------------	-----------

Width	70 cm
-------	-------

Repeat cut	No
------------	----

Half drop match	No
-----------------	----

Care	   
------	---

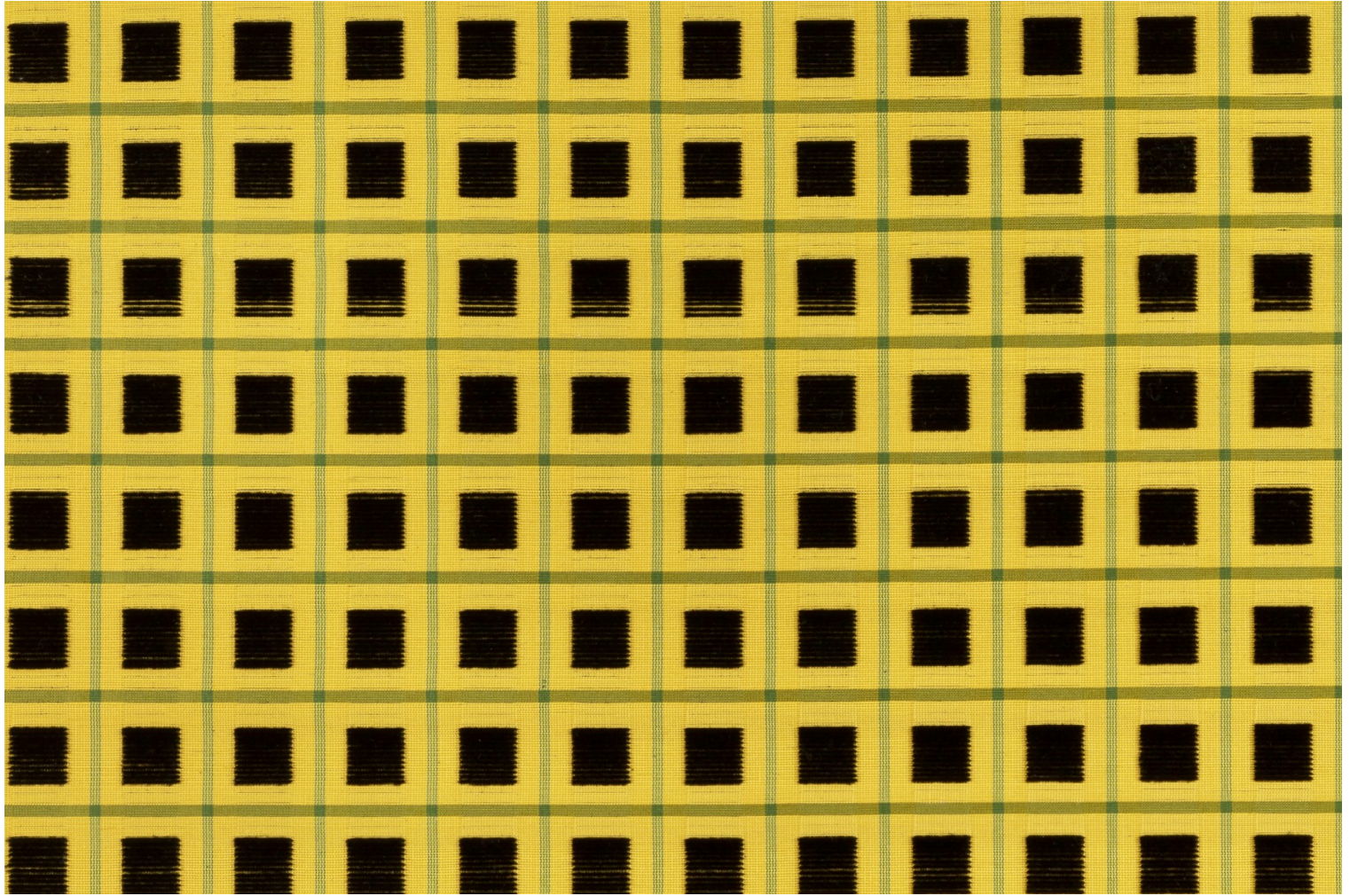
Uses	   
------	---

Weight / Linear metre	160 g
-----------------------	-------

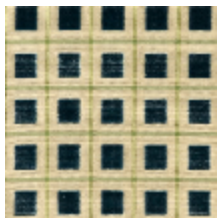


# LELIEVRE

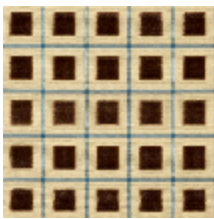
PARIS



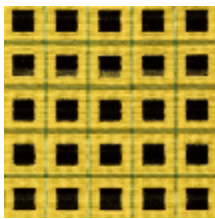
## Available colours



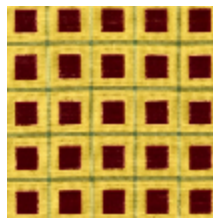
1577-01  
**CHARTRES - BLEU**



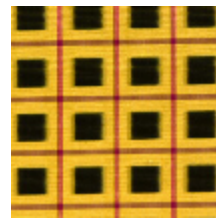
1577-02  
**CHARTRES -  
CHATAIGNE**



1577-04  
**CHARTRES - NOIR**



1577-05  
**CHARTRES -  
ROUGE**



1577-06  
**CHARTRES - VERT**



**CHARTRES - NOIR**

1577-04

