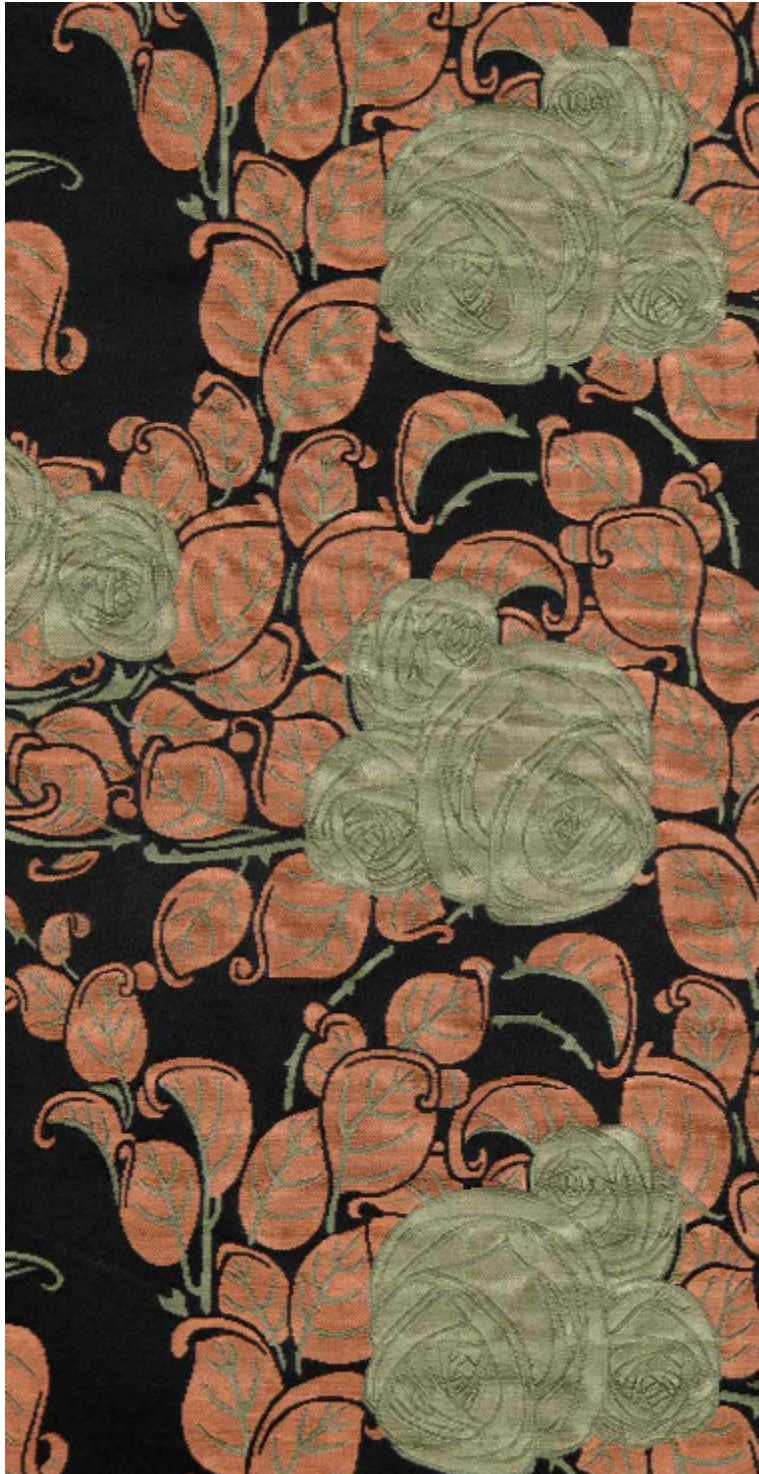


## LES ROSES – NOIR

1580-02



Reissue of the Les Roses lampas, created in 1911 by Paul Follot, an Art Deco decorator. Designed to combine luxury and modernity, this design was commissioned in 1924 for the Grand Luxe salons of the Paris ocean liner. Made of 100% silk, this three-ply lampas features a bouquet of fully bloomed roses set against a deep background. The fabric is available in an ebony background with salmon-pink roses, faithful to the historical document. A celadon and golden interpretation, luminous and delicate, reimagines the work with a contemporary breath.

Brand

TASSINARI &amp; CHATEL

## TECHNICAL DATA

Type

Damasks &amp; Lampas

Composition

Silk 100%

Width

129 cm

Repeat cut

No

Vertical repeat

31 cm

Horizontal repeat

65 cm

Half drop match

No

Uses

Weight / Linear  
metre

380 g

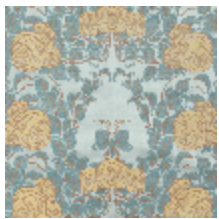


# LELIEVRE

PARIS



## Available colours



1580-01  
**LES ROSES -  
CELADON**



1580-02  
**LES ROSES - NOIR**

**LES ROSES – NOIR**

1580-02

