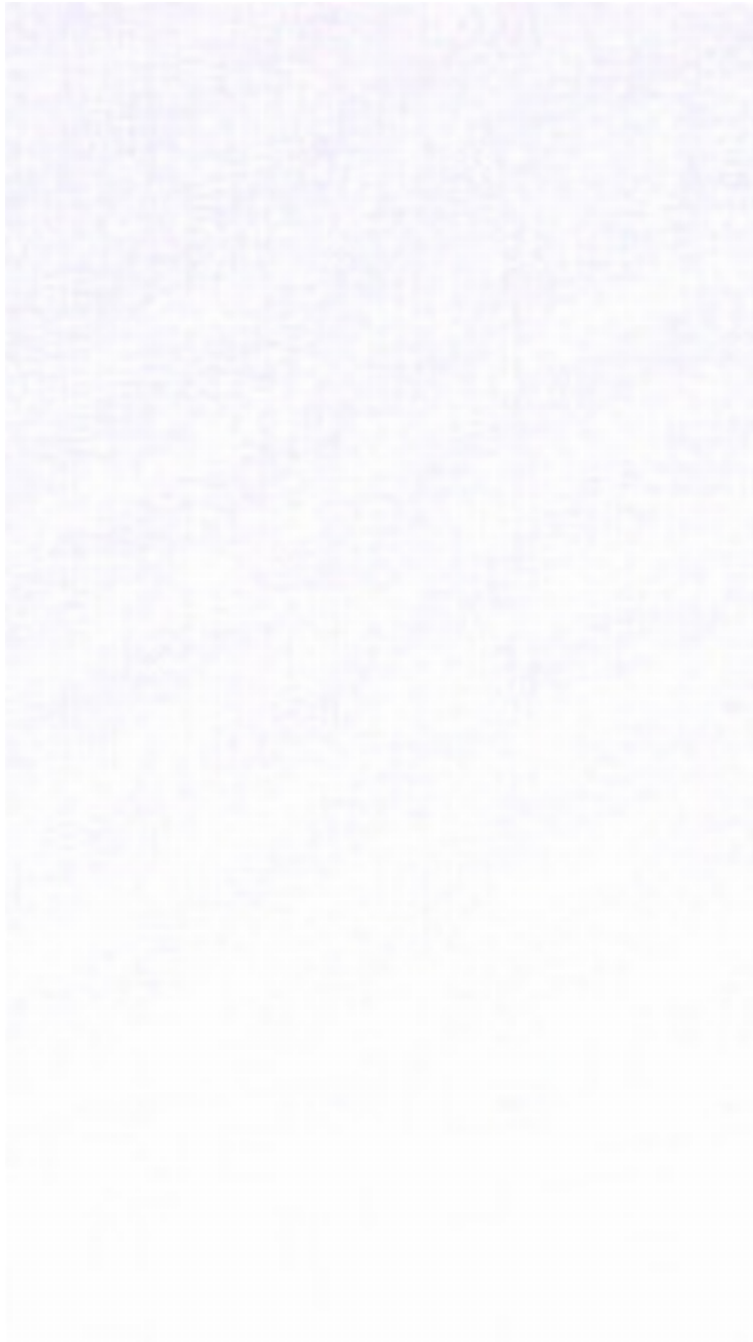


# LELIEVRE

PARIS

## FAILLE 15/16 - BLANC \*

1627-01



A denser taffeta where the weft yarn is a heavier than that of the warp, corresponding to a width of about 110cm which in the 18th century was 15/16ths of an « aune » (a french imperial unit of length). The name 15/16 has passed into common designer usage, a beautiful plain silk fabric often of a quality twice the weight of a taffeta. The lightly ridged effect of the faille makes it perfect for moirage enhancing its beauty further.

---

Collection	PATRIMOINE
------------	------------

---

Brand	TASSINARI & CHATEL
-------	--------------------

---

### TECHNICAL DATA

---

Type	Plain
------	-------

---

Composition	Silk 100%
-------------	-----------

---

Width	140 cm
-------	--------


---

Repeat cut	No
------------	----


---

Half drop match	No
-----------------	----

---

Care	  
------	---

---

Uses	  
------	---

---

Weight / Linear metre	135 g
-----------------------	-------

---

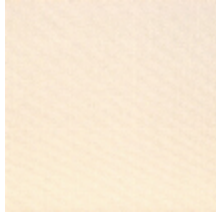
# LELIEVRE

PARIS

## Available colours



1627-01  
**FAILLE 15/16 -  
BLANC \***



1627-02  
**FAILLE 15/16 -  
CREME \***



1627-03  
**FAILLE 15/16 -  
CREME/GRIS \***



1627-04  
**FAILLE 15/16 -  
FUMEE \***



1627-05  
**FAILLE 15/16 -  
CHAMOIS \***



1627-06  
**FAILLE 15/16 -  
ORANGE \***



1627-07  
**FAILLE 15/16 -  
ECAILLE \***



1627-09  
**FAILLE 15/16 -  
LANCRET \***



1627-11  
**FAILLE 15/16 -  
NATTIER \***



1627-12  
**FAILLE 15/16 -  
BLEU \***



1627-13  
**FAILLE 15/16-  
GORGE DE PIGEO  
\***



1627-15  
**FAILLE 15/16 -  
ROSE \***



1627-16  
**FAILLE 15/16 -  
LILAS \***



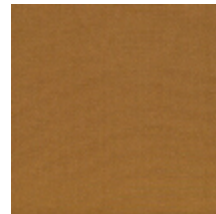
1627-17  
**FAILLE 15/16 -  
VIEUX ROSE \***



1627-22  
**FAILLE 15/16 -  
VERT \***



1627-23  
**FAILLE 15/16-BLEU  
DE LA REI \***



1627-24  
**FAILLE 15/16 -  
NOISETTE \***



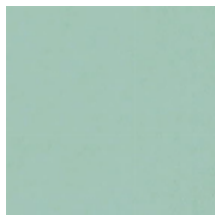
1627-25  
**FAILLE 15/16 -  
CHAMPAGNE \***



1627-31  
**FAILLE 15/16 -  
BOUGIE \***



1627-33  
**FAILLE 15/16 -  
JONQUILLE \***



1627-34  
**FAILLE 15/16 -  
PERVENCHE \***



1627-35  
**FAILLE 15/16 -  
TILLEUL \***