

LA FAVORITE - TAUPE *

1638-04



A Louis XV lampas on a « cannetille » ground. The garlands of coloured flowers in shaded tones, twist vertically up a delicately textured surface originally one of the new floral designs made fashionable by Madame de Pompadour, Louis XV s favourite. She liked to adorn herself with real or silk flowers as we can see from numerous portraits. Her salon in Bellevue was decorated with panelling sculpted with plant arabesques and floral furnishings. Under the influence of the marquise, the use of fresh colours created an atmosphere of eternal spring.

Collection	PATRIMOINE
------------	------------

Brand	TASSINARI & CHATEL
-------	--------------------

TECHNICAL DATA

Composition	Silk 100%
-------------	-----------


Width	130 cm
-------	--------

Repeat cut	No
------------	----

Vertical repeat	25 cm
-----------------	-------

Drop match	No
------------	----

Care	   
------	---

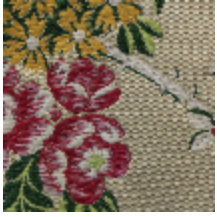
Uses	   
------	---

Weight / Linear metre	275 g
-----------------------	-------

LELIEVRE

PARIS

Available colours



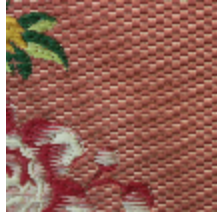
1638-01

**LA FAVORITE -
PARCHEMIN**



1638-02

LA FAVORITE - OR



1638-03

**LA FAVORITE -
PONCEAU ***



1638-04

**LA FAVORITE -
TAUPE ***



1638-05

**LA FAVORITE -
BLEU**

LA FAVORITE - TAUPE *

1638-04

