

ARGENTAN - BEIGE

1639-01



A lampas with a lace motif embellished with a variety of flowers. These so-called « lace » motifs were very fashionable around 1720-1730. Designers were seeking a less austere and, above all, lighter and more delicate effect. During this period decorations became more feminine.

Collection	PATRIMOINE
------------	------------

Brand	TASSINARI & CHATEL
-------	--------------------

TECHNICAL DATA

Composition	Viscose 42% - Linen 22% - Cotton 21% - Silk 15%
-------------	--

Width	127 cm
-------	--------

Repeat cut	Yes
------------	-----

Vertical repeat	52 cm
-----------------	-------

Drop match	No
------------	----

Care	   
------	---

Uses	   
------	---

Weight / Linear metre	405 g
-----------------------	-------

LELIEVRE

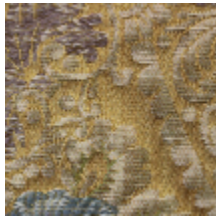
PARIS



Available colours



1639-01
**ARGENTAN -
BEIGE**



1639-02
ARGENTAN - OR



1639-03
**ARGENTAN -
CUIVRE**



1639-04
**ARGENTAN -
ROUGE**



1639-05
**ARGENTAN -
BLEU**



1639-06
**ARGENTAN -
VERT**

ARGENTAN - BEIGE

1639-01

