

## LOUIS-PHILIPPE-RUBIS

1653-02



A Rococo style brocatelle, typical of the taste of the second half of the 19th century. During this period the styles of the past were reinterpreted. The large shell and floral motifs are highlighted with small details to give it the style characteristic of the 19th century. This fabric reflects the wealthy, bourgeois spirit reigned over by King Louis-Philippe, known as the "citizen King".

Collection	PATRIMOINE
------------	------------

Brand	TASSINARI & CHATEL
-------	--------------------

### TECHNICAL DATA

Type	Damasks & Lampas
------	------------------

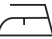
Composition	Linen 55% - Silk 45%
-------------	----------------------


Width	130 cm
-------	--------

Repeat cut	No
------------	----

Vertical repeat	65 cm
-----------------	-------

Half drop match	No
-----------------	----

Care	  
------	---

Uses	   
------	---

Weight / Linear metre	335 g
-----------------------	-------

# LELIEVRE

PARIS

## Available colours



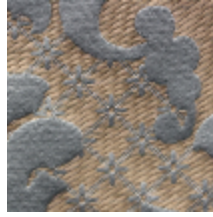
1653-01  
**LOUIS-PHILIPPE-  
POURPRE \***



1653-02  
**LOUIS-PHILIPPE-  
RUBIS**



1653-04  
**LOUIS-PHILIPPE-  
OR**



1653-06  
**LOUIS-PHILIPPE-  
OPALE**



1653-07  
**LOUIS-PHILIPPE-  
ARGENT \***



1653-05  
**LOUIS-PHILIPPE-  
CHARTREUSE \***

**LOUIS-PHILIPPE-RUBIS**

1653-02

