

# LELIEVRE

PARIS

## CERNUSCHI-ROUGE

1655-01



In the style of Viollet-Le Duc and Edouard Lièvre. A marvellous, richly coloured lampas, like a cloisonné of foliage scrolls, arabesques, neo-Gothic and Chinoiserie style motifs. The colours glow in combinations characteristic of the Napoleon III period with intense dark, or more subtle elegant grounds.

---

Collection	PATRIMOINE
------------	------------

---

Brand	TASSINARI & CHATEL
-------	--------------------

---

### TECHNICAL DATA

---

Composition	Silk 100%
-------------	-----------

---

Width	130 cm
-------	--------

---

Repeat cut	No
------------	----

---

Vertical repeat	26 cm
-----------------	-------

---

Drop match	No
------------	----

---

Care	  
------	---

---

Uses	   
------	---

---

Weight / Linear metre	225 g
-----------------------	-------

---

# LELIEVRE

PARIS

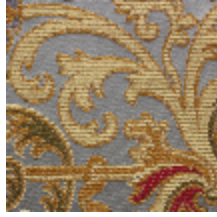
## Available colours



1655-01  
**CERNUSCHI-  
ROUGE**



1655-03  
**CERNUSCHI-  
POURPRE**



1655-04  
**CERNUSCHI-BLEU**



1655-05  
**CERNUSCHI-  
VERT**



1655-06  
**CERNUSCHI-OR**



1655-07  
**CERNUSCHI-  
IVOIRE**

**CERNUSCHI-ROUGE**

1655-01

# LELIEVRE

PARIS



# LELIEVRE

PARIS



[lelievrepairs.com](http://lelievrepairs.com)  
[contact@lelievrepairs.com](mailto:contact@lelievrepairs.com)