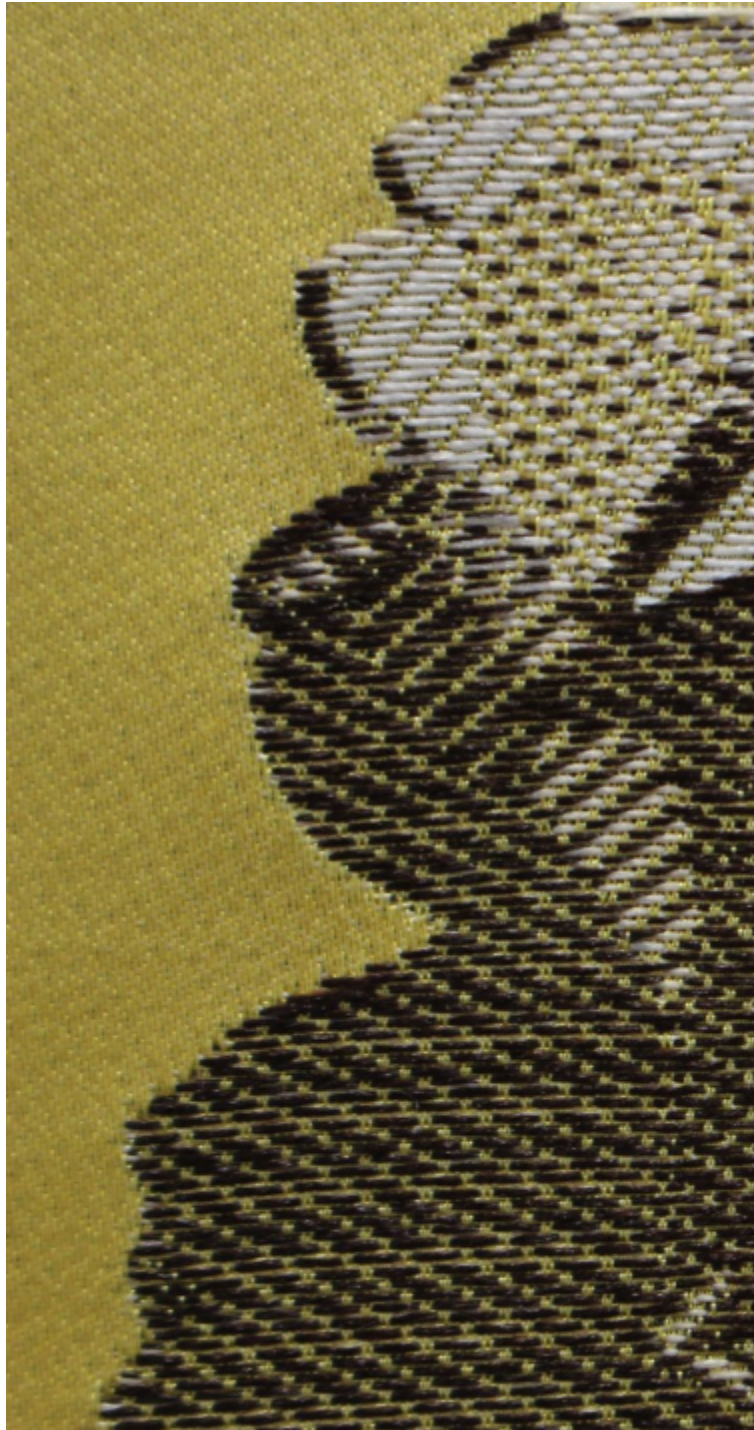


OFFENBACH-OR

1656-02



A beautiful 'Second Empire' lampas on a satin ground representing a bouquet of roses framed with garlands of leaves worked in grisaille. The original design, created by Pierre-Adrien Chabal-Dussurgey in 1867 was composed of two different bouquets of flowers. Photography, the new science of the Second Empire was a great inspiration for the creator of this design, worked in grisaille. He also designed for the Palais des Tuileries and the Palais de l'Elysée, and was highly appreciated by Empress Eugénie.

Collection	PATRIMOINE
------------	------------

Brand	TASSINARI & CHATEL
-------	--------------------

TECHNICAL DATA

Composition	Silk 100%
-------------	-----------

Width	130 cm
-------	--------

Repeat cut	Yes
------------	-----

Vertical repeat	54 cm
-----------------	-------

Drop match	No
------------	----

Care	   
------	---

Uses	   
------	---

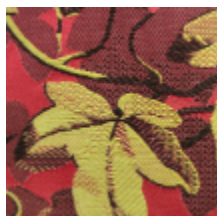
Weight / Linear metre	195 g
-----------------------	-------

LELIEVRE

PARIS



Available colours



1656-01
**OFFENBACH-
ROUGE ***



1656-02
OFFENBACH-OR



1656-03
**OFFENBACH-
IVOIRE**



1656-04
**OFFENBACH-
BLEU**