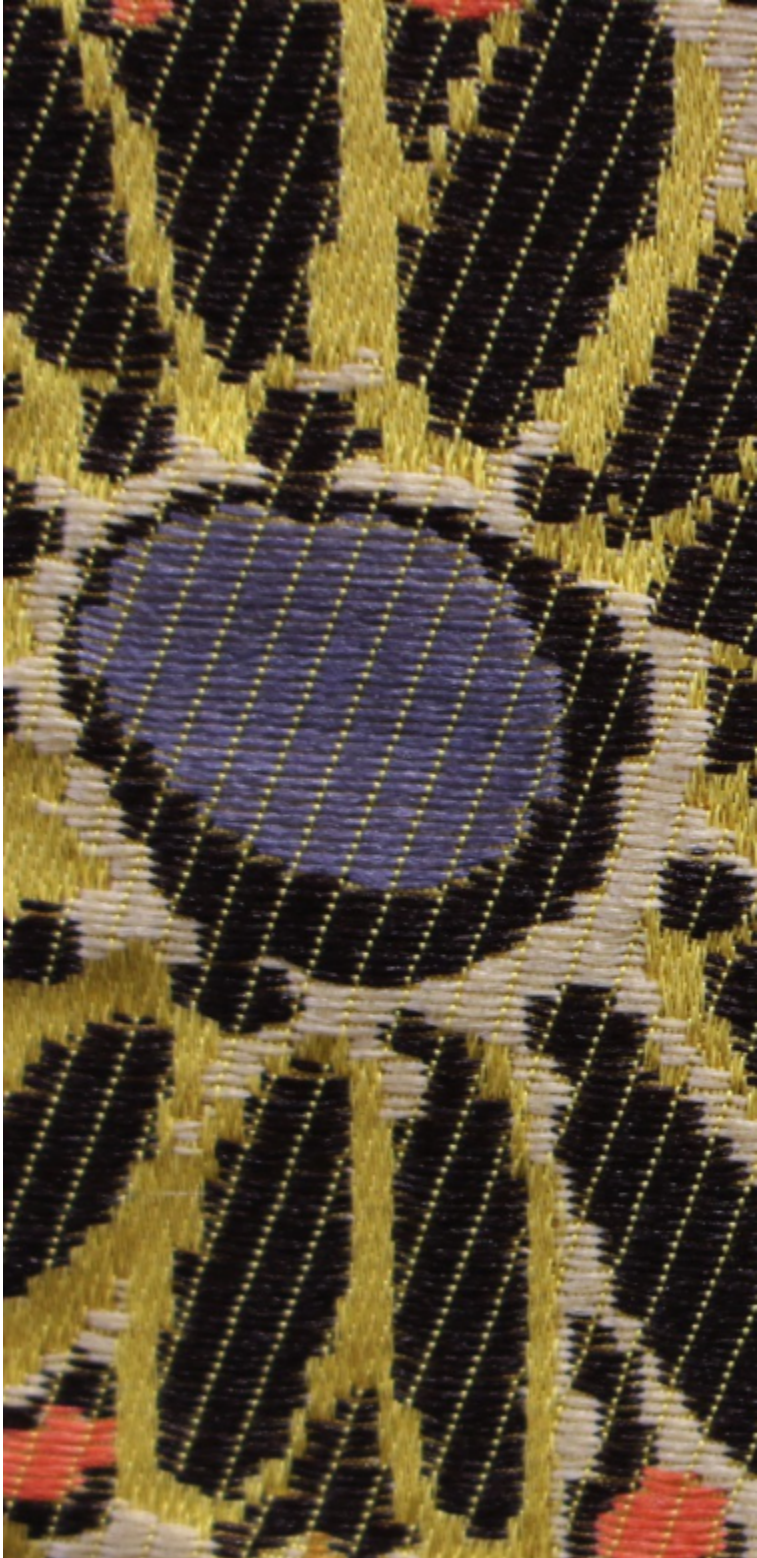


## LALIQUE - OR

1660-01



Between the Art Nouveau and Art Deco periods, a few years concentrated on floral decoration. Maybe as a reaction to the Great War of 1914-1918, artists like Matisse, Dufy and even Picasso, interpreted the flower differently. Numerous illustrators and artists participated in these creations. One such artist, Suzanne Lalique daughter of the famous glass designer René Lalique, sold one of her designs to A Mr. Tassinari who transposed it into a superb lampas in 100% silk. In 1914, Paul Iribe, Andre Mare, Edouard Bénédictus, Robert Bonfils, Raoul Dufy, all worked on the beauty of fabric... dedicated to fashion, decoration and theatre design.

Collection	PATRIMOINE
------------	------------

Brand	TASSINARI & CHATEL
-------	--------------------

## TECHNICAL DATA

Composition	Silk 100%
-------------	-----------

Width	130 cm
-------	--------

Repeat cut	No
------------	----

Vertical repeat	39 cm
-----------------	-------

Drop match	No
------------	----

Care	   
------	---

Uses	   
------	---

Weight / Linear metre	270 g
-----------------------	-------

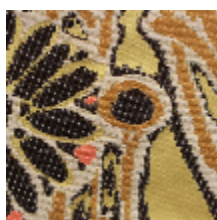


# LELIEVRE

PARIS



## Available colours



1660-01  
**LALIQUE - OR**



1660-02  
**LALIQUE - IVOIRE**



**LALIQUE - OR**

1660-01

