

# LELIEVRE

PARIS

## FONTENAY - ALBATRE

1679-01



This beautiful cotton and silk satin and gourgouran stripe is refined and understated. A rhythmic and elegant alternation of satin and ottoman highlighted with a fine chiseled line. A range of 19 colours to complement the great classics, for walling, curtains and decorative upholstery.

---

Collection	PATRIMOINE
------------	------------

---

Brand	TASSINARI & CHATEL
-------	--------------------

---

### TECHNICAL DATA

---

Composition	Cotton 57% - Silk 43%
-------------	-----------------------

---

Width	140 cm
-------	--------

---

Repeat cut	No
------------	----

---

Drop match	No
------------	----

---

Care	   
------	---

---

Uses	   
------	---

---

Weight / Linear metre	240 g
-----------------------	-------

---

# LELIEVRE

PARIS



# LELIEVRE

PARIS

## Available colours



1679-01  
**FONTENAY -  
ALBATRE**



1679-02  
**FONTENAY -  
IVOIRE**



1679-03  
**FONTENAY -  
PLATINE \***



1679-04  
**FONTENAY -  
CHAMPAGNE**



1679-06  
**FONTENAY -  
BOUTON D'OR**



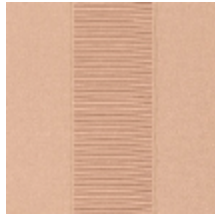
1679-07  
**FONTENAY -  
AMBRE**



1679-09  
**FONTENAY -  
RUBIS**



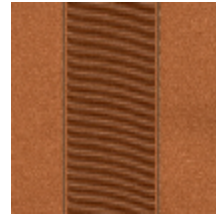
1679-10  
**FONTENAY -  
ROSE ANCIEN**



1679-11  
**FONTENAY -  
POUDRE**



1679-12  
**FONTENAY -  
RAMIER**



1679-14  
**FONTENAY -  
MACARON**



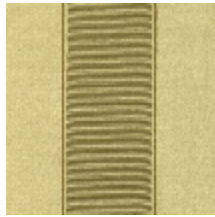
1679-15  
**FONTENAY -  
AMETHYSTE**



1679-16  
**FONTENAY -  
FAIENCE**



1679-17  
**FONTENAY -  
MYRTE**



1679-18  
**FONTENAY -  
AMANDE**



1679-19  
**FONTENAY -  
CELADON**



**FONTENAY - ALBATRE**

1679-01

