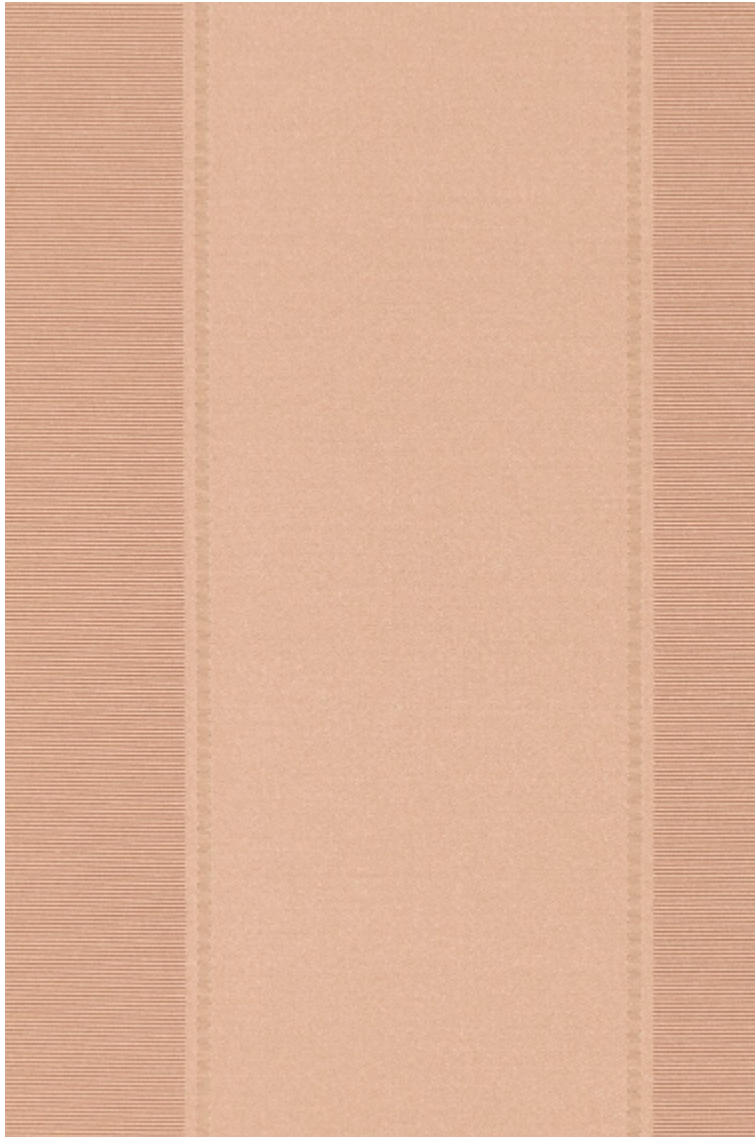


# LELIEVRE

PARIS

## FONTENAY - POUDRE

1679-11



This beautiful cotton and silk satin and gourgouran stripe is refined and understated. A rhythmic and elegant alternation of satin and ottoman highlighted with a fine chiseled line. A range of 19 colours to complement the great classics, for walling, curtains and decorative upholstery.

Collection **PATRIMOINE**

Brand **TASSINARI & CHATEL**

### TECHNICAL DATA

Composition **Cotton 57% - Silk 43%**

Width **140 cm**

Repeat cut **No**

Drop match **No**

Care 

Uses 

Weight / Linear metre **240 g**

# LELIEVRE

PARIS



# LELIEVRE

PARIS

## Available colours



1679-01  
**FONTENAY -  
ALBATRE**



1679-02  
**FONTENAY -  
IVOIRE**



1679-03  
**FONTENAY -  
PLATINE \***



1679-04  
**FONTENAY -  
CHAMPAGNE**



1679-06  
**FONTENAY -  
BOUTON D'OR**



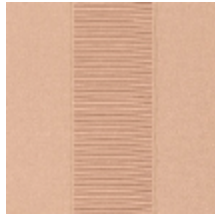
1679-07  
**FONTENAY -  
AMBRE**



1679-09  
**FONTENAY -  
RUBIS**



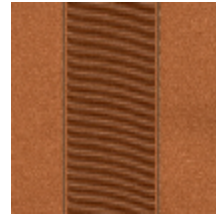
1679-10  
**FONTENAY -  
ROSE ANCIEN**



1679-11  
**FONTENAY -  
POUDRE**



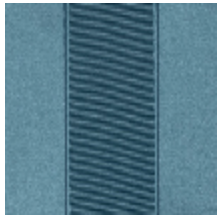
1679-12  
**FONTENAY -  
RAMIER**



1679-14  
**FONTENAY -  
MACARON**



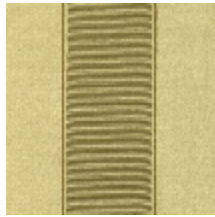
1679-15  
**FONTENAY -  
AMETHYSTE**



1679-16  
**FONTENAY -  
FAIENCE**



1679-17  
**FONTENAY -  
MYRTE**



1679-18  
**FONTENAY -  
AMANDE**



1679-19  
**FONTENAY -  
CELADON**



**FONTENAY - POUDRE**

1679-11

