

# LELIEVRE

PARIS

## FONTENAY - RAMIER

1679-12



This beautiful cotton and silk satin and gourgouran stripe is refined and understated. A rhythmic and elegant alternation of satin and ottoman highlighted with a fine chiseled line. A range of 19 colours to complement the great classics, for walling, curtains and decorative upholstery.

---

Collection PATRIMOINE

---

Brand TASSINARI & CHATEL

---

### TECHNICAL DATA

---

Composition Cotton 57% - Silk 43%

---

Width 140 cm

---

Repeat cut No



---

Drop match No

---

Care   

---

Uses    

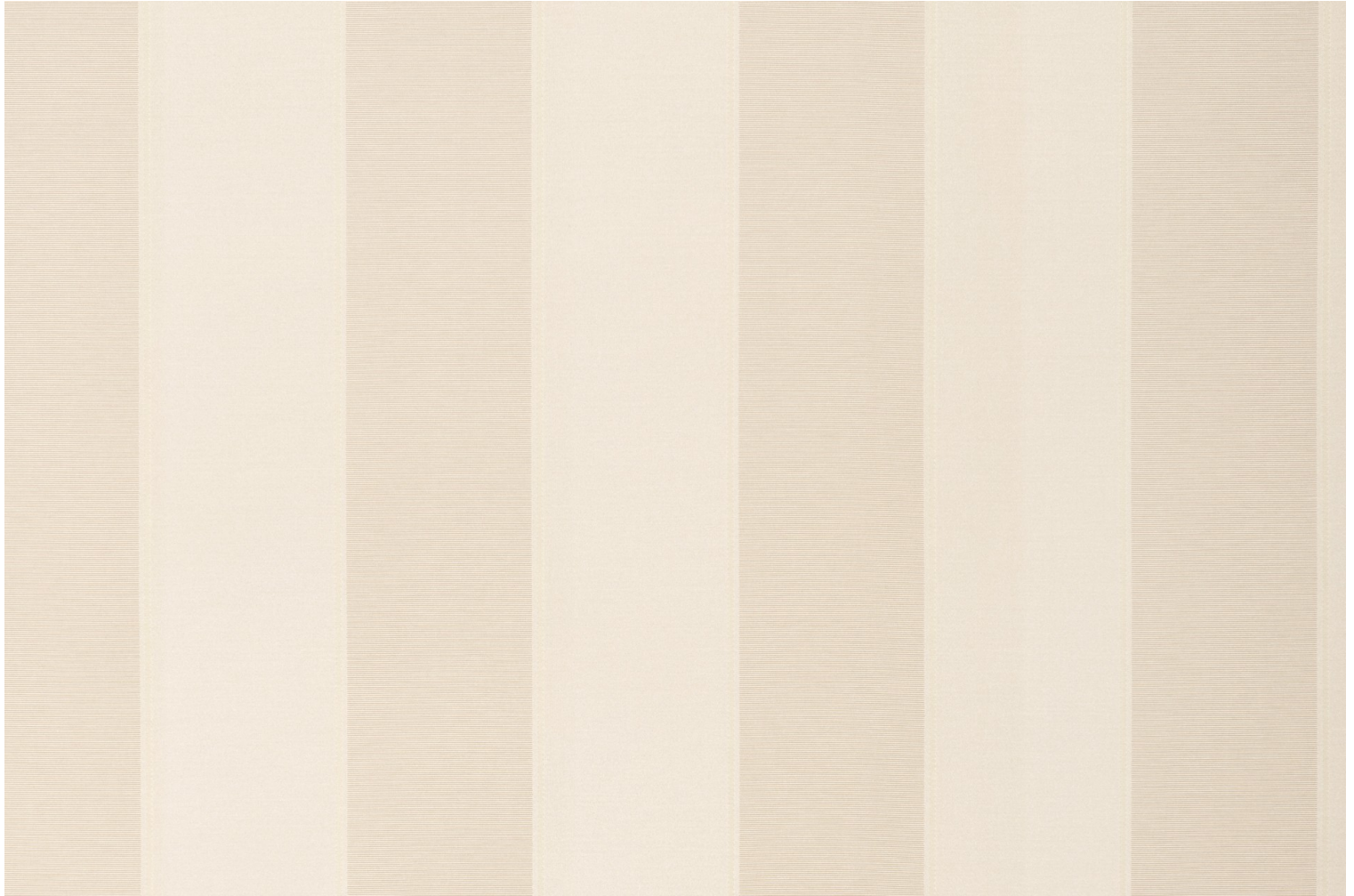
---

Weight / Linear metre 240 g

---

# LELIEVRE

PARIS



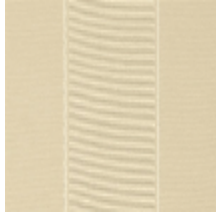
# LELIEVRE

PARIS

## Available colours



1679-01  
**FONTENAY -  
ALBATRE**



1679-02  
**FONTENAY -  
IVOIRE**



1679-03  
**FONTENAY -  
PLATINE \***



1679-04  
**FONTENAY -  
CHAMPAGNE**



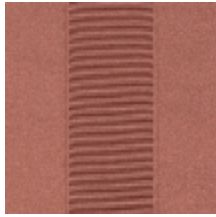
1679-06  
**FONTENAY -  
BOUTON D'OR**



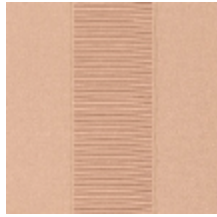
1679-07  
**FONTENAY -  
AMBRE**



1679-09  
**FONTENAY -  
RUBIS**



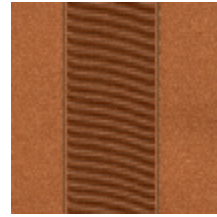
1679-10  
**FONTENAY -  
ROSE ANCIEN**



1679-11  
**FONTENAY -  
POUDRE**



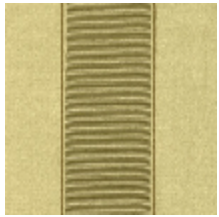
1679-12  
**FONTENAY -  
RAMIER**



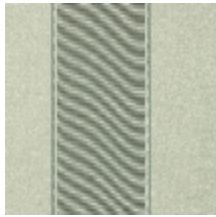
1679-14  
**FONTENAY -  
MACARON \***



1679-15  
**FONTENAY -  
AMETHYSTE**



1679-18  
**FONTENAY -  
AMANDE**



1679-19  
**FONTENAY -  
CELADON**

**FONTENAY - RAMIER**

1679-12

