

LELIEVRE

PARIS

FONTENAY - MYRTE

1679-17



This beautiful cotton and silk satin and gourgouran stripe is refined and understated. A rhythmic and elegant alternation of satin and ottoman highlighted with a fine chiseled line. A range of 19 colours to complement the great classics, for walling, curtains and decorative upholstery.

Collection **PATRIMOINE**

Brand **TASSINARI & CHATEL**

TECHNICAL DATA

Composition **Cotton 57% - Silk 43%**

Width **140 cm**

Repeat cut **No**

Drop match **No**

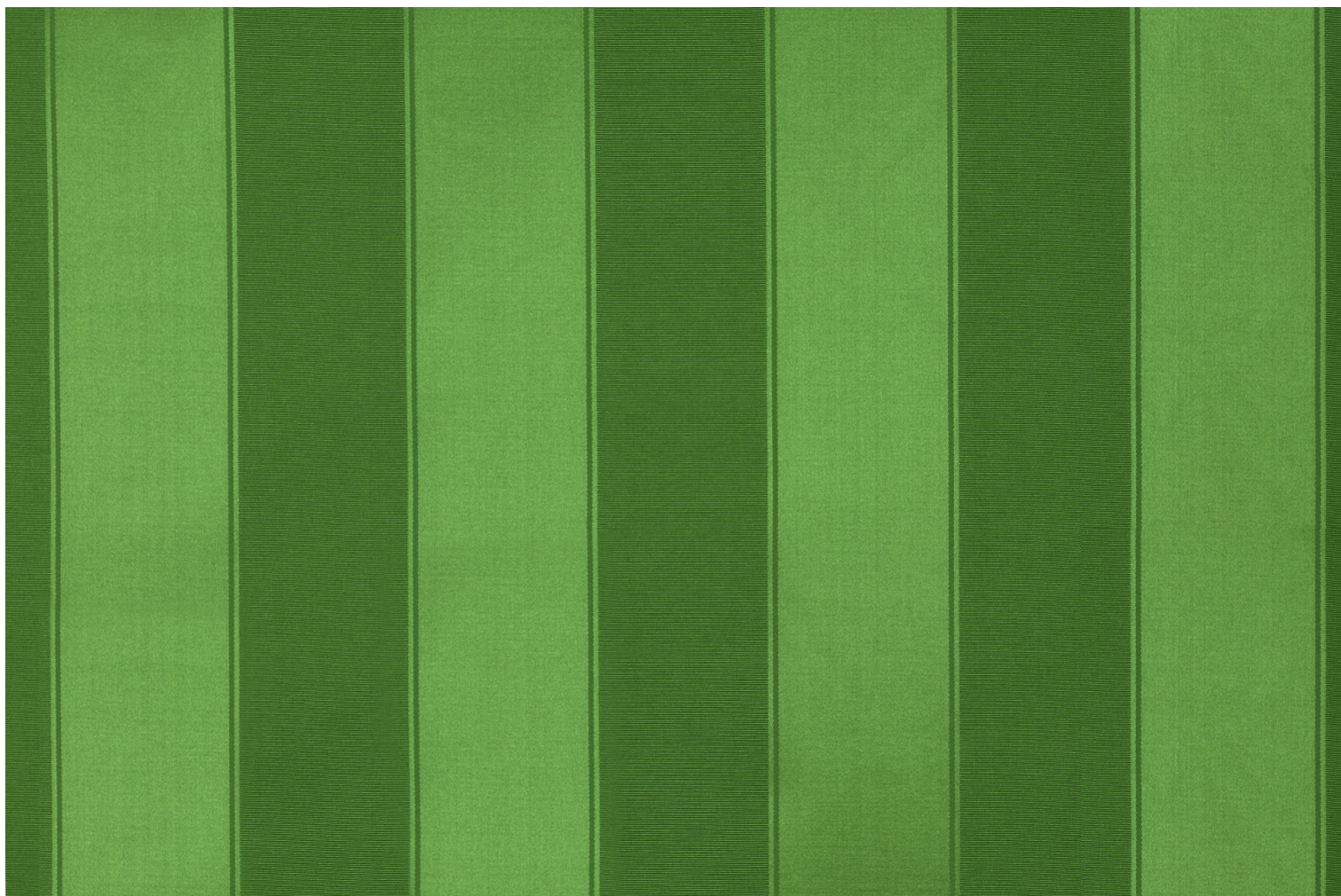
Care 

Uses 

Weight / Linear metre **240 g**

LELIEVRE

PARIS



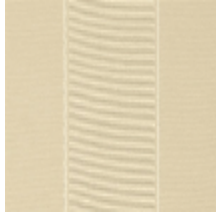
LELIEVRE

PARIS

Available colours



1679-01
**FONTENAY -
ALBATRE**



1679-02
**FONTENAY -
IVOIRE**



1679-03
**FONTENAY -
PLATINE ***



1679-04
**FONTENAY -
CHAMPAGNE**



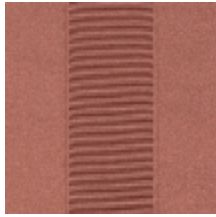
1679-06
**FONTENAY -
BOUTON D'OR**



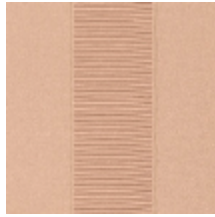
1679-07
**FONTENAY -
AMBRE**



1679-09
**FONTENAY -
RUBIS**



1679-10
**FONTENAY -
ROSE ANCIEN**



1679-11
**FONTENAY -
POUDRE**



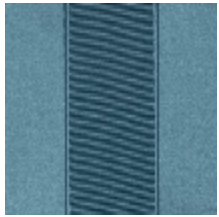
1679-12
**FONTENAY -
RAMIER**



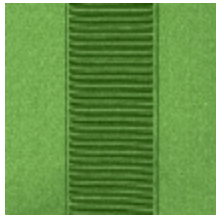
1679-14
**FONTENAY -
MACARON**



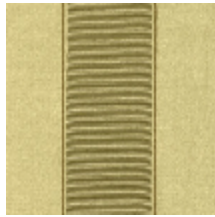
1679-15
**FONTENAY -
AMETHYSTE**



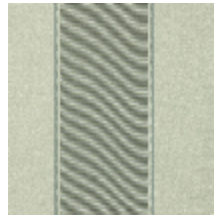
1679-16
**FONTENAY -
FAIENCE**



1679-17
**FONTENAY -
MYRTE**



1679-18
**FONTENAY -
AMANDE**



1679-19
**FONTENAY -
CELADON**

FONTENAY - MYRTE

1679-17

