

DA VINCI - NATTIER

1692-01



This small checkerboard motif from Leonardo is woven in the same quality. Da Vinci coordinates subtly with each of the colors of the brocatelle.

Collection PATRIMOINE

Brand TASSINARI & CHATEL

TECHNICAL DATA


Composition Silk 57% - Linen 43%

Width 130 cm

Repeat cut No

Drop match No

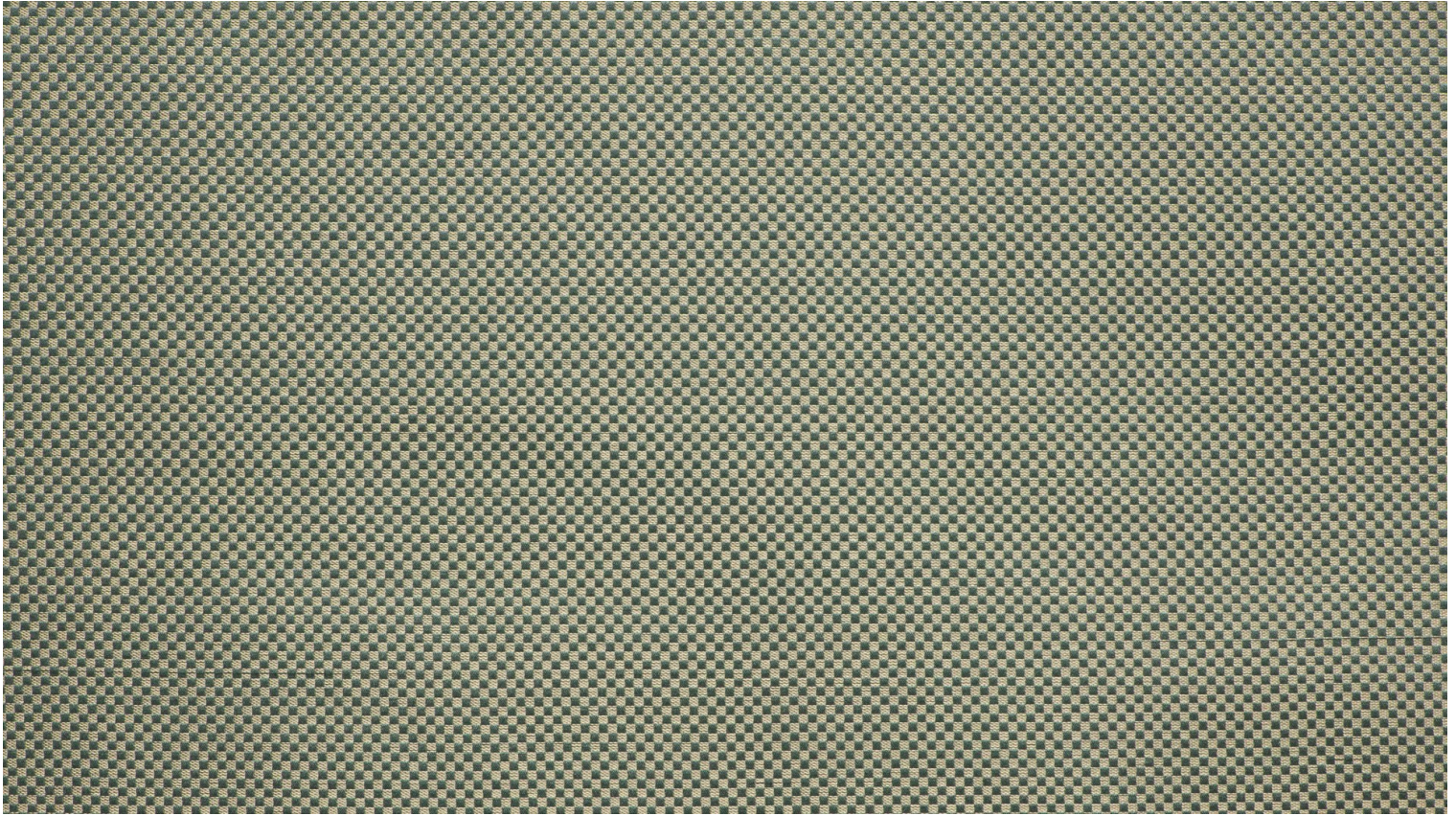
Care   

Uses    

Weight / Linear
metre 350 g

LELIEVRE

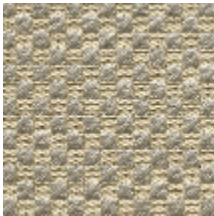
PARIS



Available colours



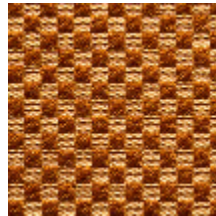
1692-01
**DA VINCI -
NATTIER**



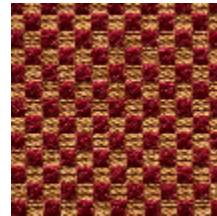
1692-02
DA VINCI - EMAIL



1692-03
DA VINCI - OR



1692-04
**DA VINCI -
ECAILLE**



1692-05
DA VINCI - RUBIS



1692-06
**DA VINCI -
MYRTHE**

DA VINCI - NATTIER

1692-01

