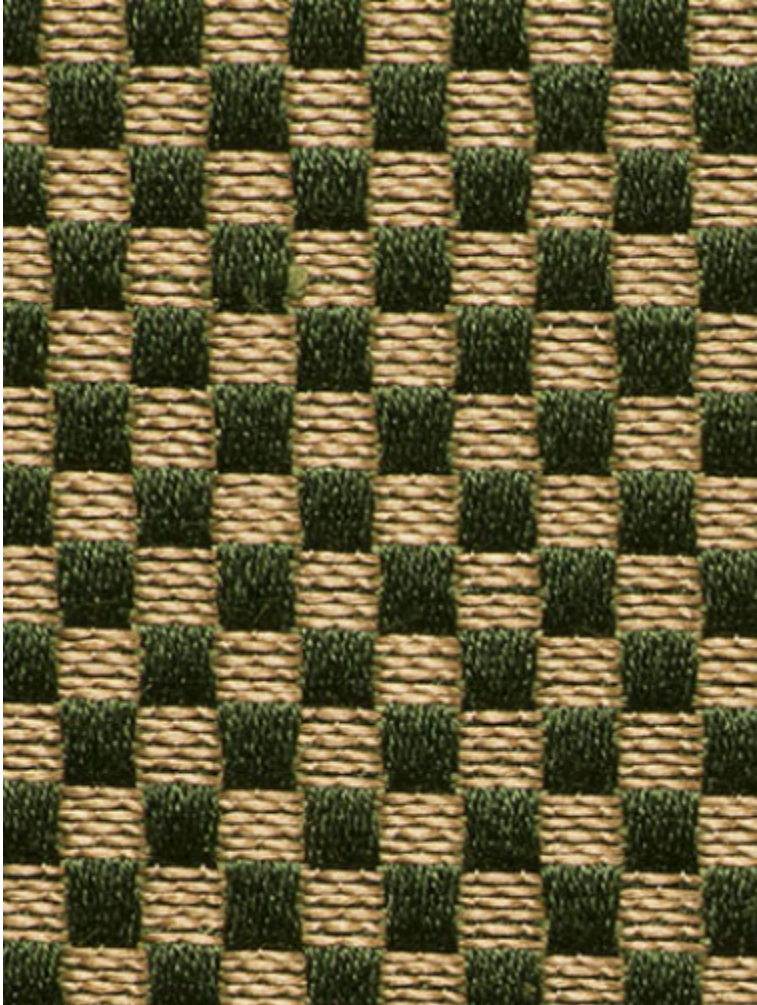


LELIEVRE

PARIS

DA VINCI - MYRTHE

1692-06



This small checkerboard motif from Leonardo is woven in the same quality. Da Vinci coordinates subtly with each of the colors of the brocatelle.

Collection	PATRIMOINE
------------	------------

Brand	TASSINARI & CHATEL
-------	--------------------

TECHNICAL DATA

Composition	Silk 57% - Linen 43%
-------------	----------------------

Width	130 cm
-------	--------

Repeat cut	No
------------	----

Drop match	No
------------	----

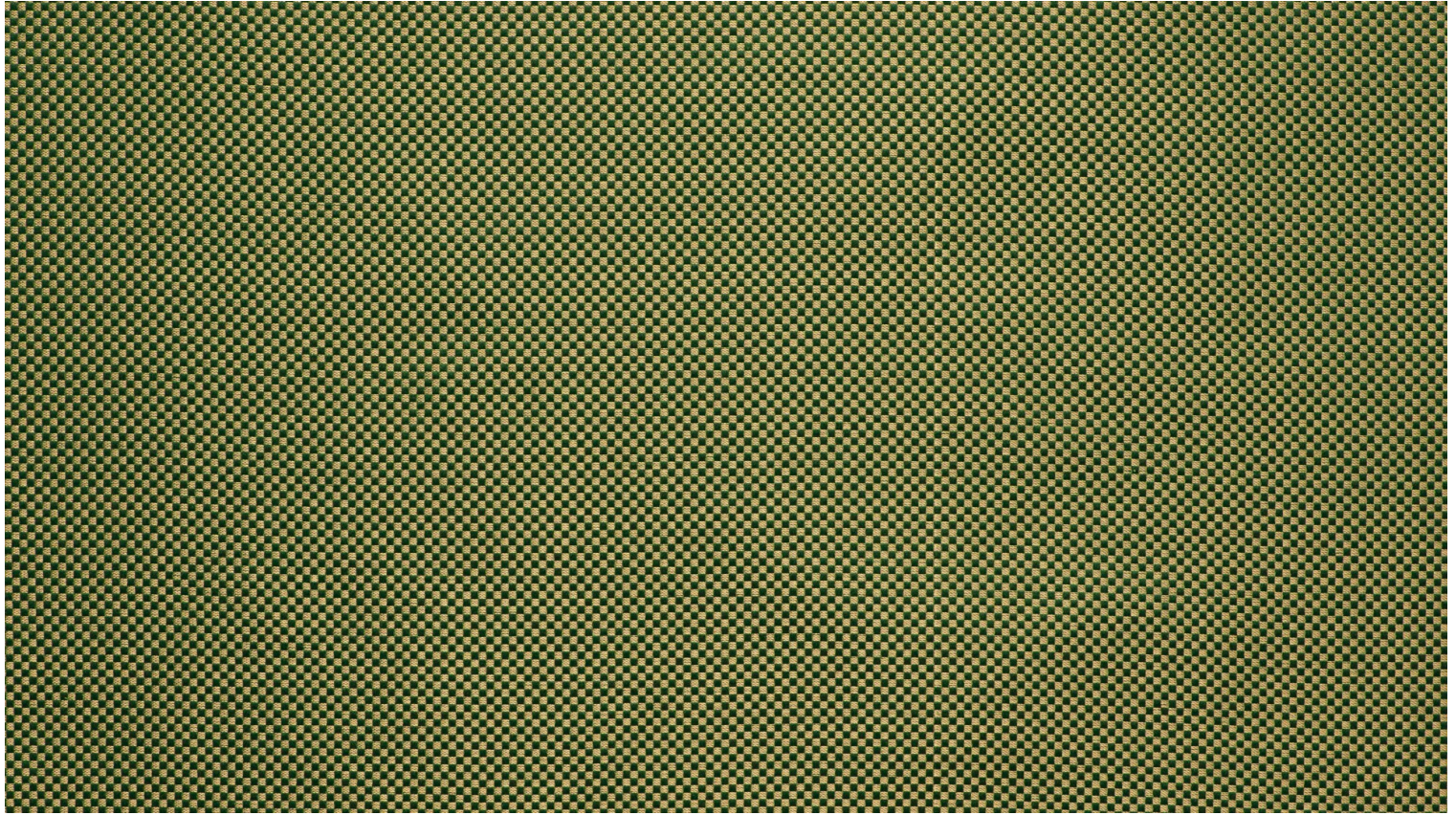
Care	   
------	---

Uses	   
------	---

Weight / Linear metre	350 g
-----------------------	-------

LELIEVRE

PARIS



Available colours



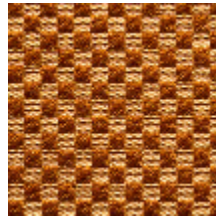
1692-01
**DA VINCI -
NATTIER**



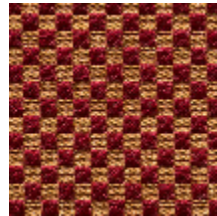
1692-02
DA VINCI - EMAIL



1692-03
DA VINCI - OR



1692-04
**DA VINCI -
ECAILLE**



1692-05
DA VINCI - RUBIS



1692-06
**DA VINCI -
MYRTHE**

DA VINCI - MYRTHE

1692-06

