

**VITRAIL – DORE**

1694-03

# LELIEVRE

PARIS



This elegant design by Maurice Dufrène, a leading figure of the French decorative arts movement in the early 20th century, was originally developed as a fine damask in 1911. It was then woven as a brocatelle for the celebrated autumn show that same year. The style of the motif is typically Art Nouveau, with entwining foliage balanced symmetrically by rhythmic sets of graphic lines characteristic of the modern Art Deco style. Usually these decorative and architectural styles are very distinctive, but here they blend subtly in this textile design. This stems from Dufrène's desire to adapt his creative work to the evolving tastes of the time.

Collection	PATRIMOINE
------------	------------

Brand	TASSINARI & CHATEL
-------	--------------------

## TECHNICAL DATA

Type	Damasks & Lampas
------	------------------

Composition	Linen 53% - Silk 47%
-------------	----------------------

Width	130 cm
-------	--------


Repeat cut	Yes
------------	-----

Vertical repeat	133 cm
-----------------	--------

Horizontal repeat	65 cm
-------------------	-------

Half drop match	No
-----------------	----

Care	  
------	---

Uses	   
------	---

Weight / Linear metre	350 g
-----------------------	-------



# LELIEVRE

PARIS



## Available colours



1694-01  
**VITRAIL -  
OPALINE**



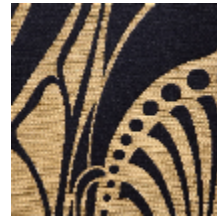
1694-02  
**VITRAIL -  
CHRYSLER**



1694-03  
**VITRAIL - DORE**



1694-04  
**VITRAIL - LAQUE**



1694-05  
**VITRAIL -  
COUPOLE**



**VITRAIL – DORE**

1694-03

