

# LELIEVRE

PARIS

## CAMMINO - ARGENT

1701-03



Typical of the Renaissance style, this brocatelle represents a horizontally repeated corolla, with a flowering thistle at the centre. The worn, 'anticato' effect on the linen background with a textured, coloured design shappe silk warp. Cammino means 'path' in Italian, in reference to the way the motif repeats 4 times across the width.

Collection **PATRIMOINE**

Brand **TASSINARI & CHATEL**

### TECHNICAL DATA

Composition **Linen 56% - Silk 44%**

Width **130 cm**

Repeat cut **No**

Vertical repeat **65 cm**

Horizontal repeat **33 cm**

Drop match **No**

Care 

Uses 

Weight / Linear metre **450 g**

# LELIEVRE

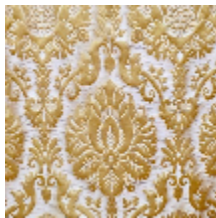
PARIS



## Available colours



1701-01  
**CAMMINO -  
RUBIS**



1701-02  
**CAMMINO - OR**



1701-03  
**CAMMINO -  
ARGENT**



**CAMMINO - ARGENT**

1701-03

