

LELIEVRE

PARIS

MIROIR - CANARD *

0239-01



Miroir is a polyester Trevira CS piece dyed satin. Created in a large range of elegant colours both subtle and rich it has an ideal drape for sophisticated curtains, subtlety and femininity for bed throws and cushions and has a high enough martindale test for decorative upholstery. It meets MI fire regulations for contract use.

Collection	COLLECTION 8
------------	--------------

Brand	LELIEVRE PARIS CONTRACT
-------	-------------------------

TECHNICAL DATA

Type	Plain
------	-------

Composition	Polyester TREVIRA CS 100%
-------------	---------------------------

Width	140 cm
-------	--------

Repeat cut	No
------------	----

Half drop match	No
-----------------	----

Care	  
------	---

Uses	   
------	---

Martindale test	19 000 T
-----------------	----------

Weight / Linear metre	300 g
-----------------------	-------

Fire rating	MI - IMO PART 7&8
-------------	-------------------

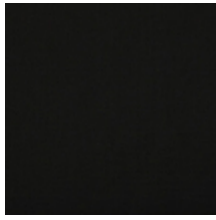
LELIEVRE

PARIS

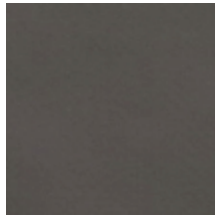
Available colours



0239-01
MIROIR - CANARD
*



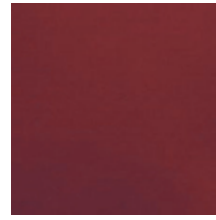
0239-03
MIROIR - NOIR *



0239-04
MIROIR - CHOCOLAT *



0239-05
MIROIR - POURPRE *



0239-06
MIROIR - GRENAT
*



0239-07
MIROIR - THEATRE
*



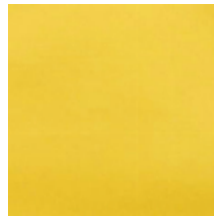
0239-09
MIROIR - CYCLAMEN *



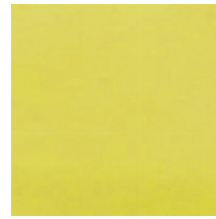
0239-12
MIROIR - AMBRE *



0239-13
MIROIR - SAFRAN
*



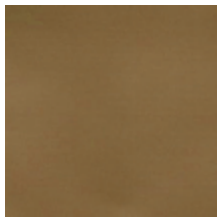
0239-14
MIROIR - OR *



0239-15
MIROIR - CHARTREUSE *



0239-16
MIROIR - ABSINTHE *



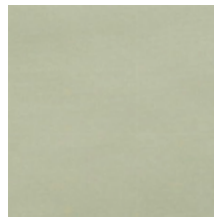
0239-17
MIROIR - HAVANE
*



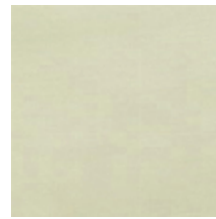
0239-18
MIROIR - ELEPHANT *



0239-19
MIROIR - MASTIC
*



0239-20
MIROIR - PLATINE
*



0239-21
MIROIR - CHANVRE *



0239-25
MIROIR - IVOIRE *



0239-26
MIROIR - BEIGE *