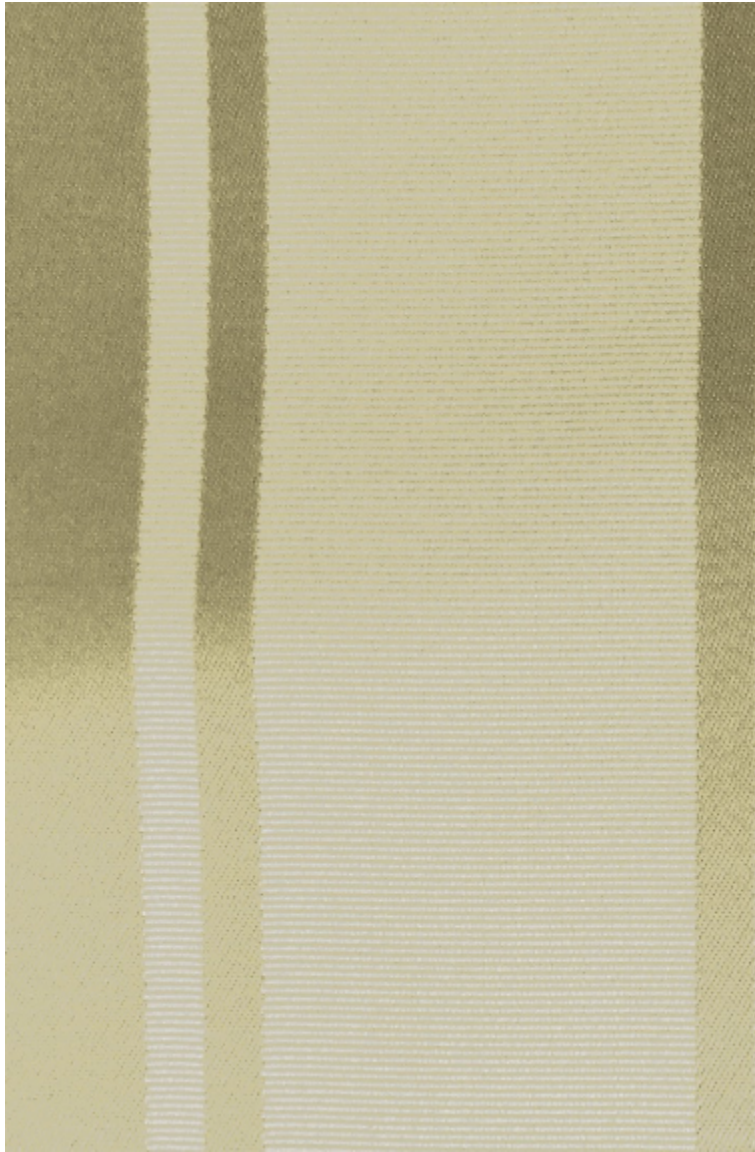


LELIEVRE

PARIS

ARIA-IVOIRE

0265-01



A new quality of regency stripe. The satin stripe is in viscose, the "gros de tours" effect in cotton; two fibres brought together to create two-tone harmonies. A large colour range of 26 two-tones created to coordinate with most of the classical silks, from both Lelievre and Tassinari & Chatel. Pastels through to more intense colours; with harmonies and deep contrasts.

Brand	QUENIN
-------	--------

TECHNICAL DATA

Composition	Cotton 72% - Viscose 28%
-------------	--------------------------

Width	140 cm
-------	--------

Repeat cut	No
------------	----

Drop match	No
------------	----

Care	   
------	---

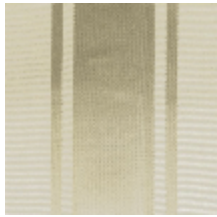
Uses	   
------	---

Weight / Linear metre	370 g
-----------------------	-------

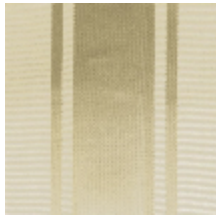
LELIEVRE

PARIS

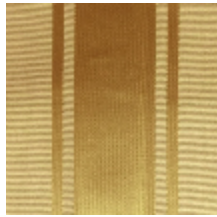
Available colours



0265-01
ARIA-IVOIRE



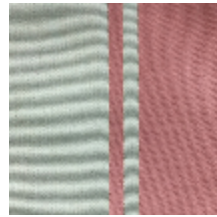
0265-02
**ARIA-
CHAMPAGNE**



0265-03
ARIA-OR



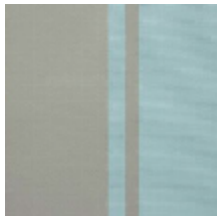
0265-05
ARIA-PARME



0265-06
ARIA-ROSE



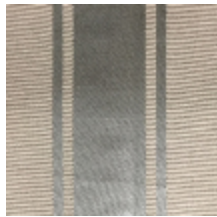
0265-07
ARIA-SAUGE



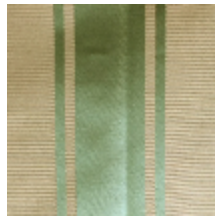
0265-09
ARIA-OPALE



0265-10
ARIA-NOISETTE



0265-11
ARIA-ARGENT



0265-13
ARIA-LIERRE



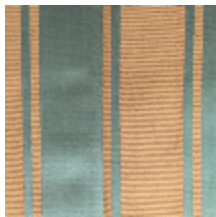
0265-15
ARIA-RUBIS *



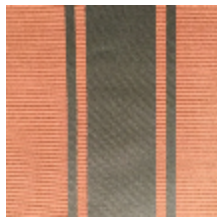
0265-16
ARIA-RUBICOND



0265-17
ARIA-CARDINAL
*



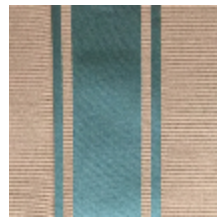
0265-19
ARIA-MAGNETITE
*



0265-20
ARIA-CARAMEL



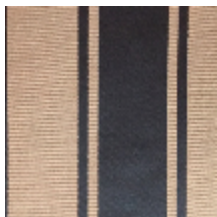
0265-21
ARIA-EMERAUDE



0265-22
ARIA-BENGALE



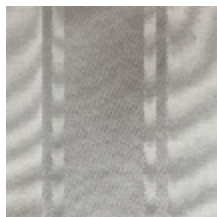
0265-23
ARIA-CRAMOISI



0265-24
ARIA-EBENE



0265-25
ARIA-POIVRE



0265-26
ARIA-NEIGE

LELIEVRE

PARIS

ARIA-IVOIRE

0265-01

