

EPICEA - GRES

3218-01

LELIEVRE

PARIS



Three fabrics echo perfectly the circular issues raised by 100% Naturel: FORSYTHIA, HÉVÉA and ÉPICÉA, made of 100% cotton labelled GRS - Global Recycled Standard - which guarantees composite textiles with a minimum of 50% recycled fibres. One of Lelièvre's key objectives is to reduce the consumption of virgin raw materials and the environmental impact of its products. Available in two colours (beige and ecru), each fabric is available in three designs - herringbone, stripes and a fuller grain.



Collection	100% NATUREL
------------	--------------

Brand	LELIEVRE PARIS
-------	----------------

TECHNICAL DATA

Type	Plain material
------	----------------

Composition	Cotton GRS 100%
-------------	-----------------

Width	141 cm
-------	--------

Repeat cut	No
------------	----

Half drop match	No
-----------------	----

Care	  
------	---

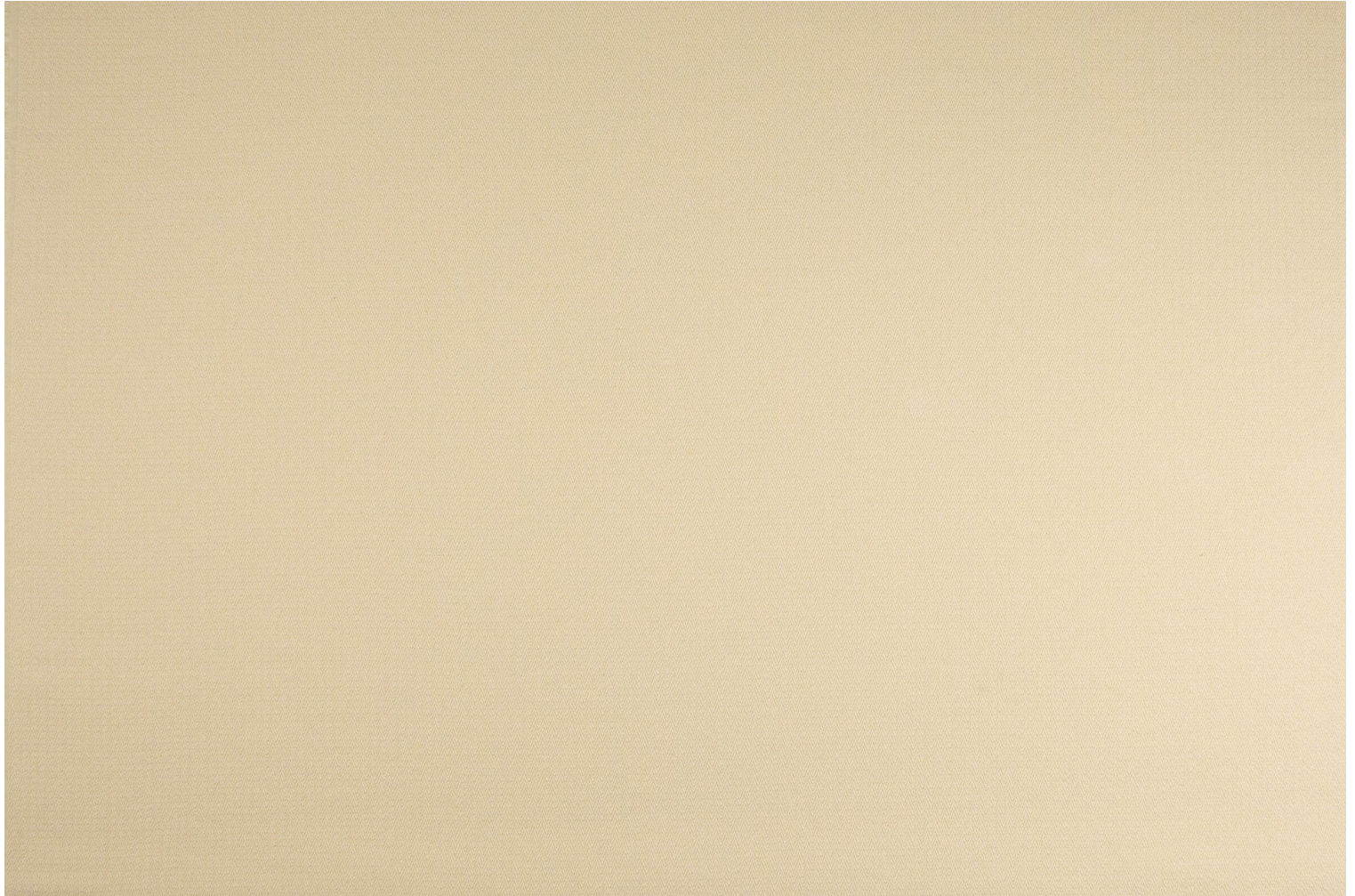
Uses	  
------	---

Martindale test	20 000 T
-----------------	----------

Weight / Linear metre	745 g
-----------------------	-------

LELIEVRE

PARIS



Available colours



3218-01
EPICEA - GRES



3218-02
EPICEA - FICELLE

EPICEA - GRES

3218-01

