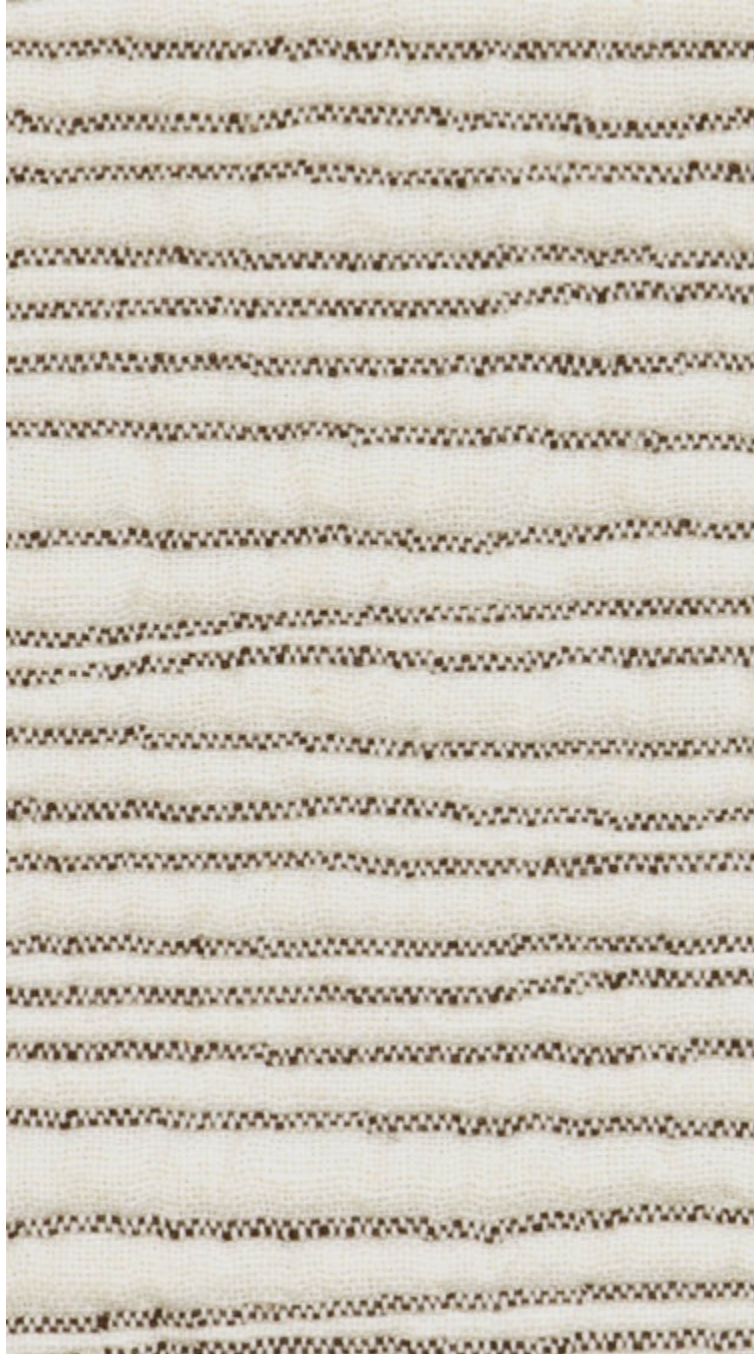


GENEVRIER – BRUME

3219-02



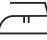





GENEVRIER is a reversible cotton and linen quilt that plays with contrasting textures and materials. Its supple jacquard weave reveals a pattern as elegant on the front as it is on the reverse. The fibres are spun and woven in Europe, in keeping with traditional textile craftsmanship.



Collection	100% NATUREL
Brand	LELIEVRE PARIS

TECHNICAL DATA

Type	Stripes
Composition	Cotton 66% - Linen 34%
Width	131 cm
Repeat cut	No
Half drop match	No
Care	  
Uses	  
Weight / Linear metre	650 g

LELIEVRE

PARIS



Available colours



3219-01
**GENEVRIER -
GRES**



3219-02
**GENEVRIER -
BRUME**

GENEVRIER – BRUME

3219-02

