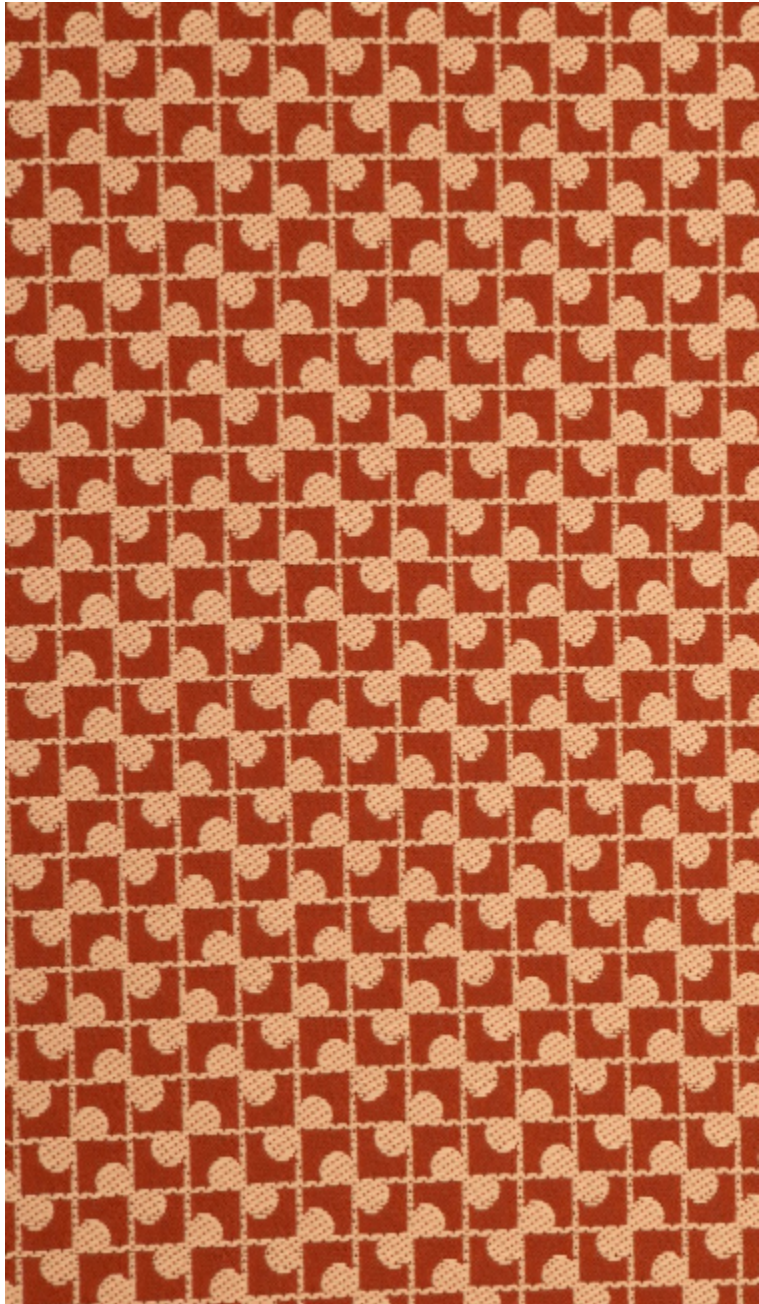


LELIEVRE

PARIS

TOWN M1 - BRIQUE

3229-03



This small two-tone jacquard design is based on ceramic tiles, creating a subtle vibration. Very flexible, it's ideal for curtains.

Collection METROPOLIS

Brand LELIÈVRE PARIS CONTRACT

TECHNICAL DATA

Composition Polyester FR 100%


Width 142 cm


Repeat cut No

Vertical repeat 3 cm

Horizontal repeat 3 cm

Drop match No

Care   

Uses    

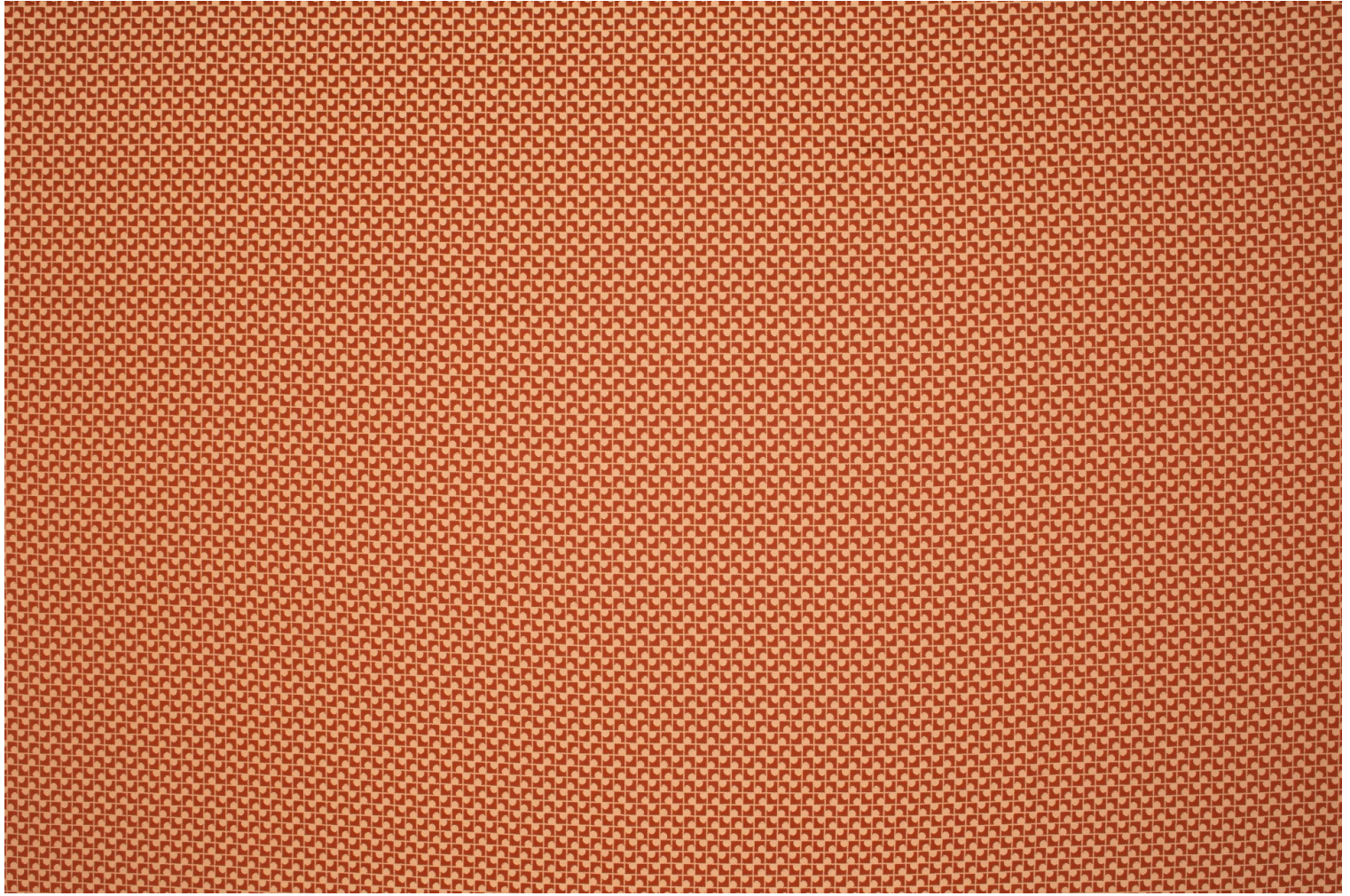
Martindale test 40 000 T

Weight / Linear metre 520 g

Fire rating M1 - EN1021-1&2

LELIEVRE

PARIS



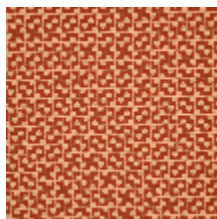
Available colours



3229-01
**TOWN M1 -
NATUREL**



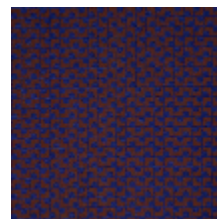
3229-02
**TOWN M1 -
CAMEL**



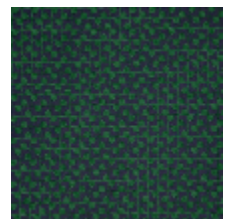
3229-03
**TOWN M1 -
BRIQUE**



3229-04
**TOWN M1 - LIE DE
VIN**



3229-05
TOWN M1 - LAPIS



3229-06
**TOWN M1 -
FORET**

TOWN M1 - BRIQUE

3229-03

