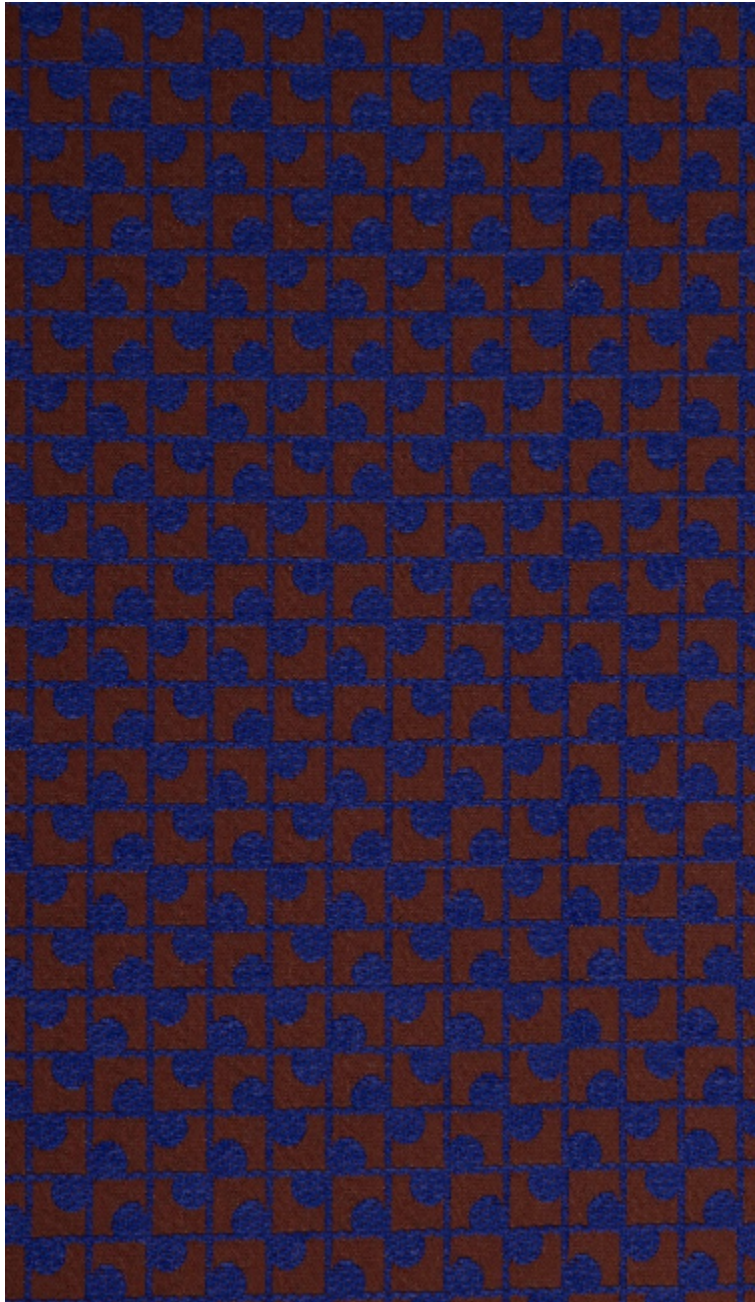


# LELIEVRE

PARIS

## TOWN M1 - LAPIS

3229-05



This small two-tone jacquard design is based on ceramic tiles, creating a subtle vibration. Very flexible, it's ideal for curtains.

---

Collection	METROPOLIS
------------	------------

---

Brand	LELIÈVRE PARIS CONTRACT
-------	-------------------------

---

### TECHNICAL DATA

---

Composition	Polyester FR 100%
-------------	-------------------

---

Width	142 cm
-------	--------

---

Repeat cut	No
------------	----

---

Vertical repeat	3 cm
-----------------	------

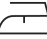
---

Horizontal repeat	3 cm
-------------------	------

---

Drop match	No
------------	----

---

Care	  
------	---

---

Uses	   
------	---

---

Martindale test	40 000 T
-----------------	----------

---

Weight / Linear metre	520 g
-----------------------	-------

---

Fire rating	M1 - EN1021-1&2
-------------	-----------------

---



# LELIEVRE

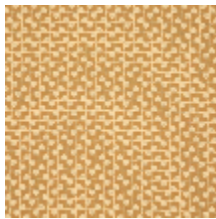
PARIS



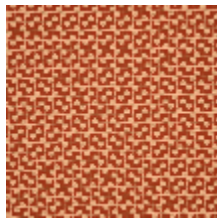
## Available colours



3229-01  
**TOWN M1 -  
NATUREL**



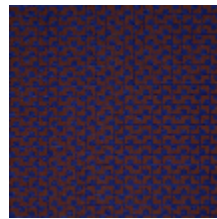
3229-02  
**TOWN M1 -  
CAMEL**



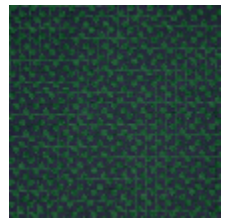
3229-03  
**TOWN M1 -  
BRIQUE**



3229-04  
**TOWN M1 - LIE DE  
VIN**



3229-05  
**TOWN M1 - LAPIS**



3229-06  
**TOWN M1 -  
FORET**



**TOWN M1 - LAPIS**

3229-05

