

**DATTIER - NATUREL**

3247-01



DATTIER is a textured jacquard with a handcrafted look, inspired by the graphic silhouette of the palm fronds of the tree it is named after. This fabric stands out with its thick yarn that forms a botanical pattern both structured and soft, offering beautiful suppleness and a natural hand.

Collection	CONTRÉE SAUVAGE
------------	-----------------

Brand	LELIÈVRE PARIS CONTRACT
-------	-------------------------

## TECHNICAL DATA

Type	Jacquard
------	----------

Composition	Polyester FR 100%
-------------	-------------------

Width	140 cm
-------	--------



Repeat cut	No
------------	----

Vertical repeat	13 cm
-----------------	-------

Horizontal repeat	12 cm
-------------------	-------

Half drop match	No
-----------------	----

Care	   
------	---

Uses	   
------	---

Martindale test	40 000 T
-----------------	----------

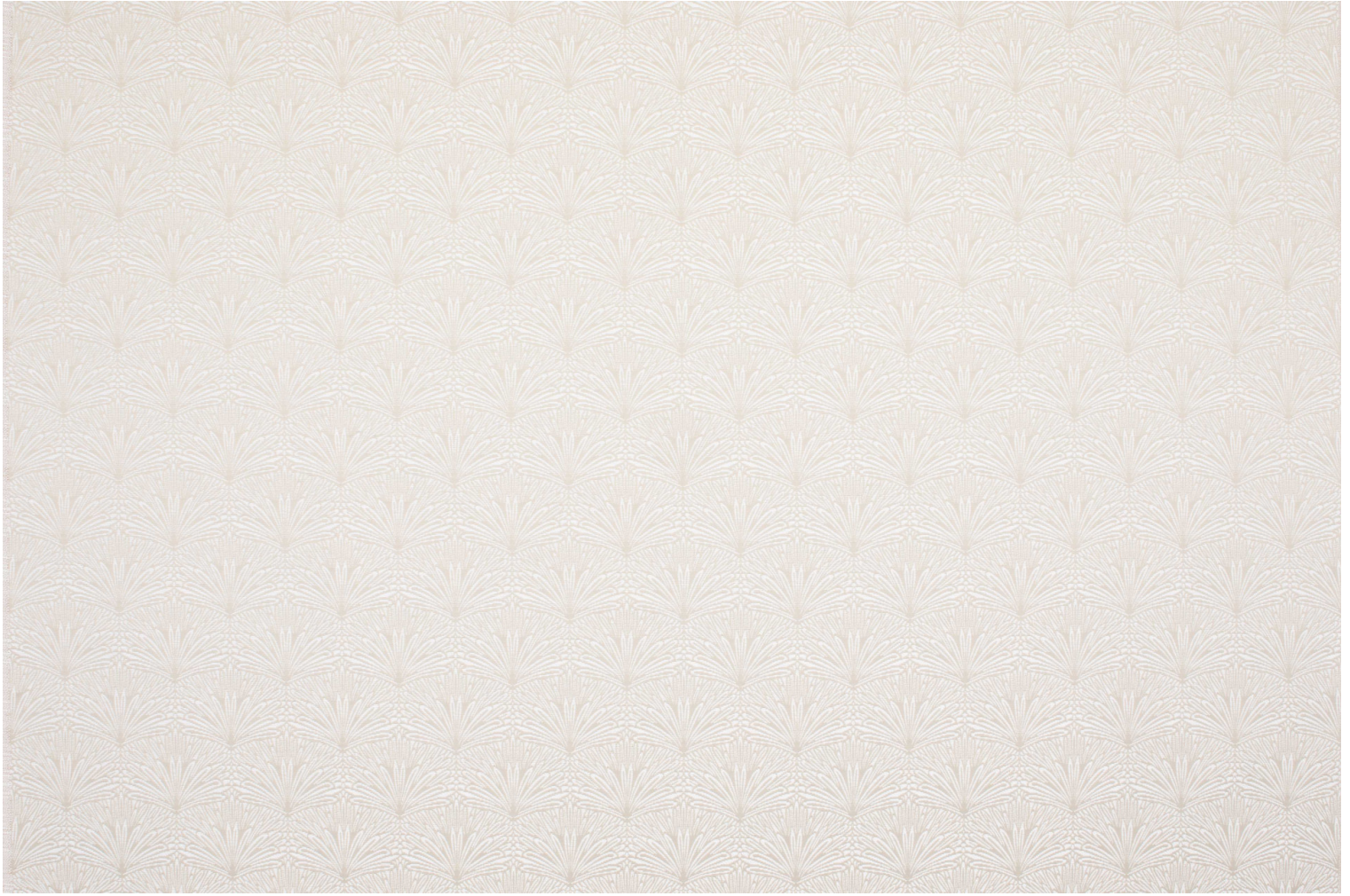
Weight / Linear metre	570 g
-----------------------	-------

Fire rating	M1 - EN1021-1&2
-------------	-----------------



# LELIEVRE

PARIS



## Available colours



3247-01  
**DATTIER -  
NATUREL**



3247-02  
**DATTIER -  
MORDORE**



3247-03  
**DATTIER - NUIT**



3247-04  
**DATTIER -  
ECORCE**



3247-05  
**DATTIER - KAKI**



3247-06  
**DATTIER -  
BRUGNON**



**DATTIER - NATUREL**

3247-01

