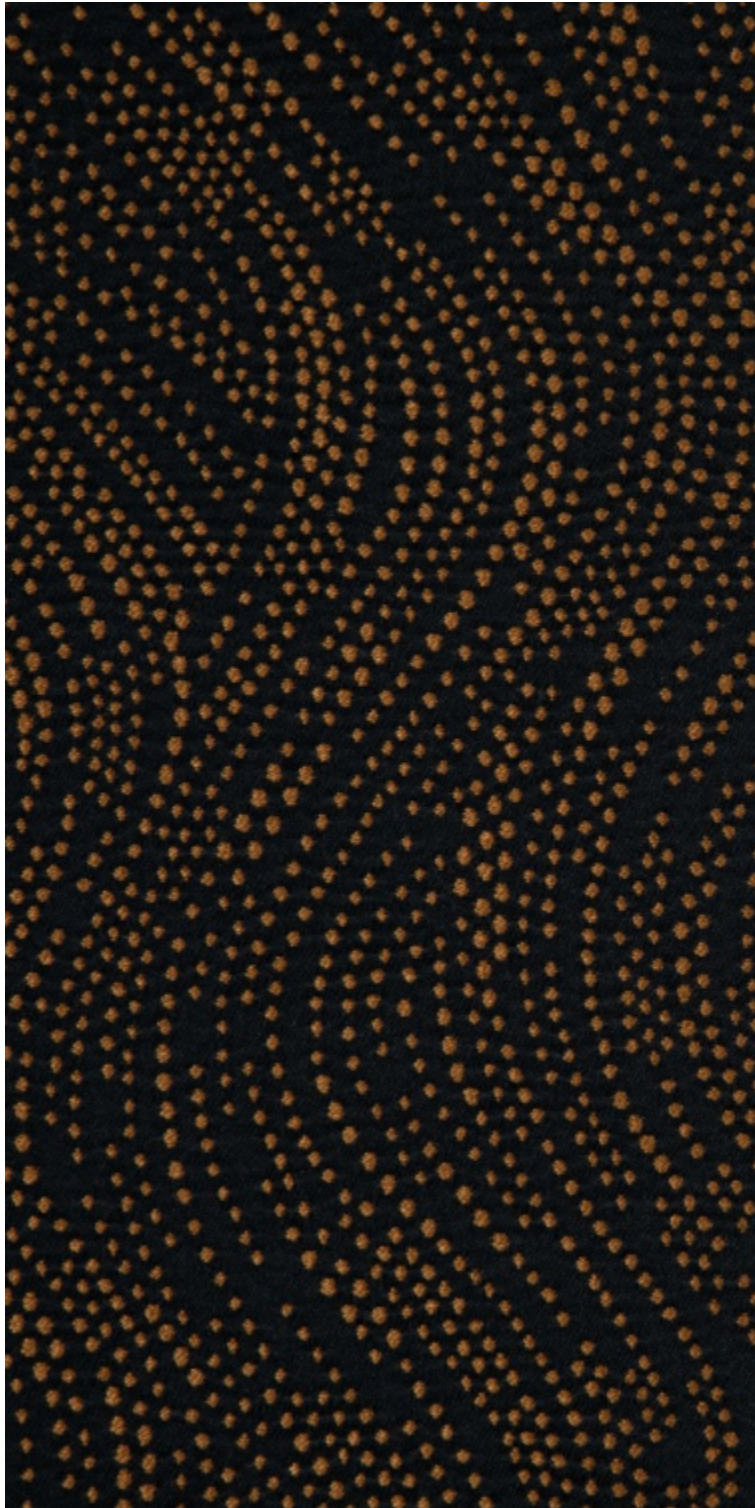


LELIEVRE

PARIS

CASCADE - BOISE

3250-04



CASCADE is a jacquard with a textured relief, evoking crystalline rain and the shimmer of gliding droplets. Its vertical pattern creates a delicate flow across a satin-like background, catching the light and enhancing volume. Ideal for both curtains and upholstery.

Collection **CONTRÉE SAUVAGE**

Brand **LELIÈVRE PARIS CONTRACT**

TECHNICAL DATA

Type **Stripes**

Composition **Polyester TREVIRA CS 100%**

Width **147 cm**

Repeat cut **No**

Vertical repeat **36 cm**

Horizontal repeat **37 cm**

Half drop match **No**

Care 

Uses 

Martindale test **40 000 T**

Weight / Linear metre **610 g**

Fire rating **M1 - EN1021-1&2**

LELIEVRE

PARIS



LELIEVRE

PARIS

Available colours



3250-01
**CASCADE -
NATUREL**



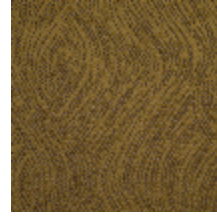
3250-02
CASCADE - BEIGE



3250-03
**CASCADE -
GAZELLE**



3250-04
CASCADE - BOISE



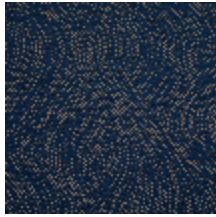
3250-05
**CASCADE -
BRONZE**



3250-06
**CASCADE -
GENTIANE**



3250-07
**CASCADE -
PAPRIKA**



3250-08
**CASCADE -
ENCRE**

CASCADE - BOISE

3250-04

LELIEVRE

PARIS

LELIEVRE

PARIS

