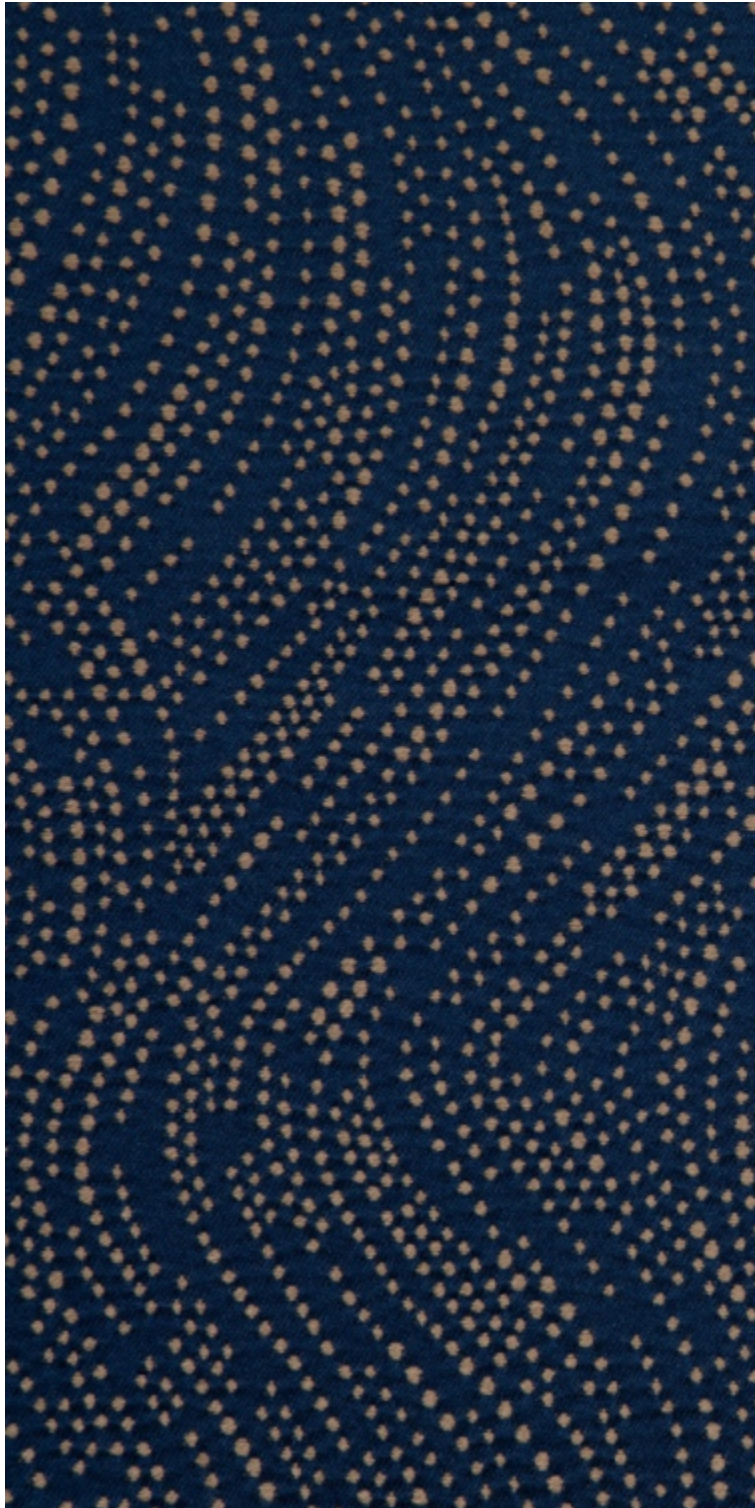


# LELIEVRE

PARIS

## CASCADE - ENCRE

3250-08



CASCADE is a jacquard with a textured relief, evoking crystalline rain and the shimmer of gliding droplets. Its vertical pattern creates a delicate flow across a satin-like background, catching the light and enhancing volume. Ideal for both curtains and upholstery.

Collection **CONTRÉE SAUVAGE**

Brand **LELIÈVRE PARIS CONTRACT**

### TECHNICAL DATA

Type **Stripes**

Composition **Polyester TREVIRA CS 100%**

Width **147 cm**

Repeat cut **No**

Vertical repeat **36 cm**

Horizontal repeat **37 cm**

Half drop match **No**

Care    

Uses    

Martindale test **40 000 T**

Weight / Linear metre **610 g**

Fire rating **M1 - EN1021-1&2**

LELIEVRE

PARIS



[lelievrepairs.com](http://lelievrepairs.com)  
[contact@lelievrepairs.com](mailto:contact@lelievrepairs.com)

# LELIEVRE

PARIS

## Available colours



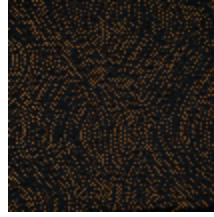
3250-01  
**CASCADE -  
NATUREL**



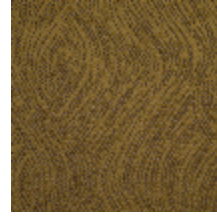
3250-02  
**CASCADE - BEIGE**



3250-03  
**CASCADE -  
GAZELLE**



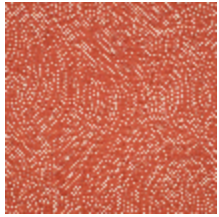
3250-04  
**CASCADE - BOISE**



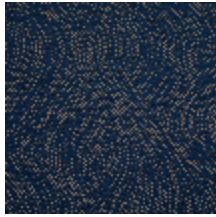
3250-05  
**CASCADE -  
BRONZE**



3250-06  
**CASCADE -  
GENTIANE**



3250-07  
**CASCADE -  
PAPRIKA**



3250-08  
**CASCADE -  
ENCRE**

**CASCADE - ENCRE**

3250-08

# LELIEVRE

PARIS

# LELIEVRE

PARIS

