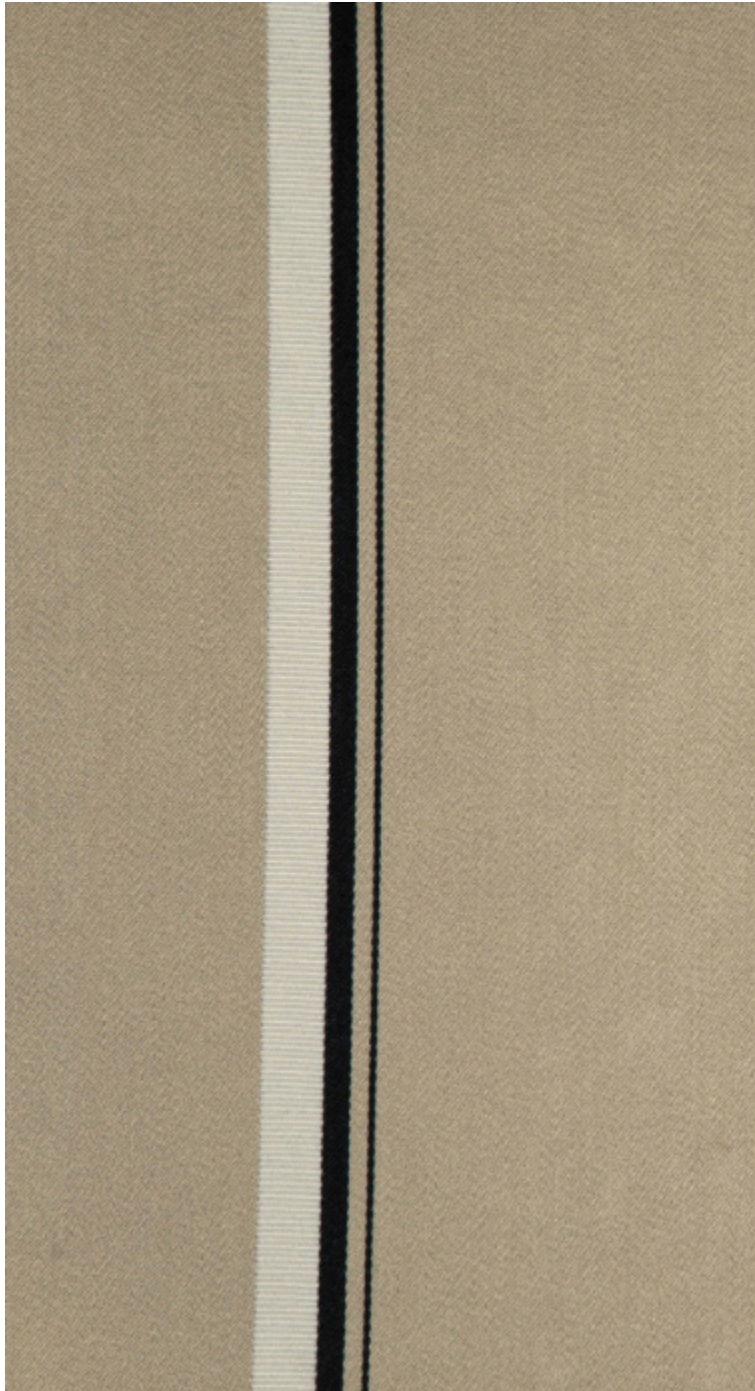


ACACIA - MASTIC

3251-03



ACACIA stands out with a matte satin background enhanced by a fine ottoman stripe, whose horizontal weave creates a play of contrast and texture. Both classic and contemporary, it brings a subtle and elegant rhythm to the fabric.

Collection	CONTRÉE SAUVAGE
------------	-----------------

Brand	LELIÈVRE PARIS CONTRACT
-------	-------------------------

TECHNICAL DATA

Type	Stripes
------	---------

Composition	Polyester TREVIRA CS 100%
-------------	---------------------------

Width	146 cm
-------	--------

Repeat cut	No
------------	----

Horizontal repeat	7 cm
-------------------	------

Half drop match	No
-----------------	----

Care	
------	--

Uses	
------	--

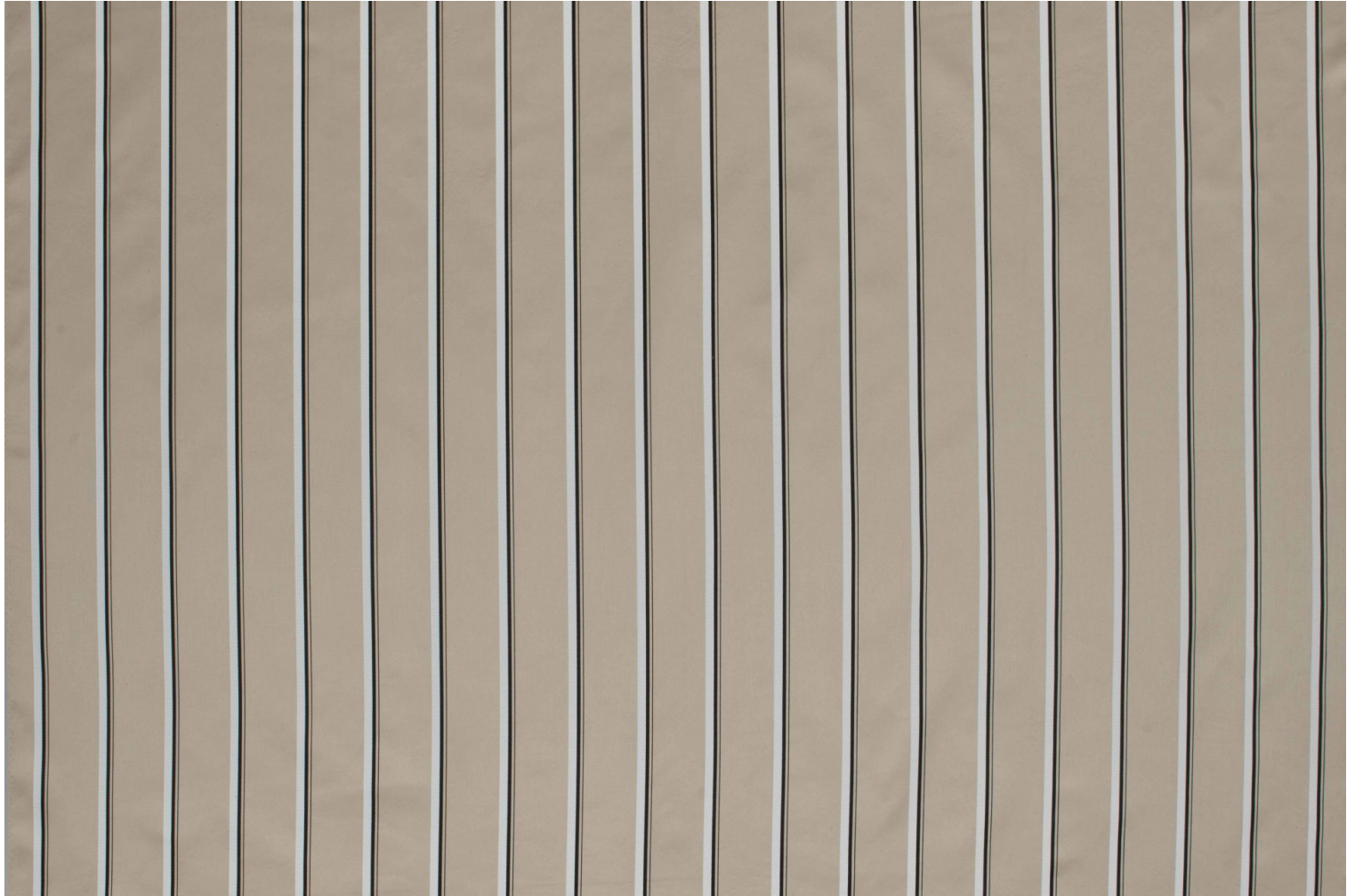
Martindale test	40 000 T
-----------------	----------

Weight / Linear metre	440 g
-----------------------	-------

Fire rating	M1 - EN1021-1&2
-------------	-----------------

LELIEVRE

PARIS



lelievrepairs.com
contact@lelievrepairs.com

LELIEVRE

PARIS

Available colours



3251-01
**ACACIA -
NATUREL**



3251-02
**ACACIA -
FICELLE**



3251-03
**ACACIA -
MASTIC**



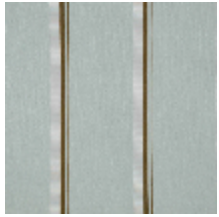
3251-04
**ACACIA -
GAZELLE**



3251-06
**ACACIA -
GENTIANE**



3251-07
**ACACIA -
BRONZE**



3251-08
**ACACIA -
CELADON**



3251-09
**ACACIA -
PAPRIKA**

ACACIA - MASTIC

3251-03

