

LELIEVRE

PARIS

KHAIMA - CAMEL

3265-03



KHAIMA (the Arabic word for the 'tent' traditionally used by nomads travelling in the desert) is the only high-performance material in the collection - a natural and soft touch polyester fabric. From beige to navy to terracotta, KHAIMA is available in six colourways that share the same earth-toned base woven with pyramid-shaped motifs. | Design: Tristan Auer

Collection	NAJD
------------	------

Brand	LELIEVRE PARIS
-------	----------------

TECHNICAL DATA

Type	Jacquard
------	----------

Composition	Polyester FR 100%
-------------	-------------------

Width	141 cm
-------	--------

Repeat cut	No
------------	----

Vertical repeat	17 cm
-----------------	-------

Horizontal repeat	35 cm
-------------------	-------

Half drop match	No
-----------------	----

Care	  
------	---

Uses	  
------	---

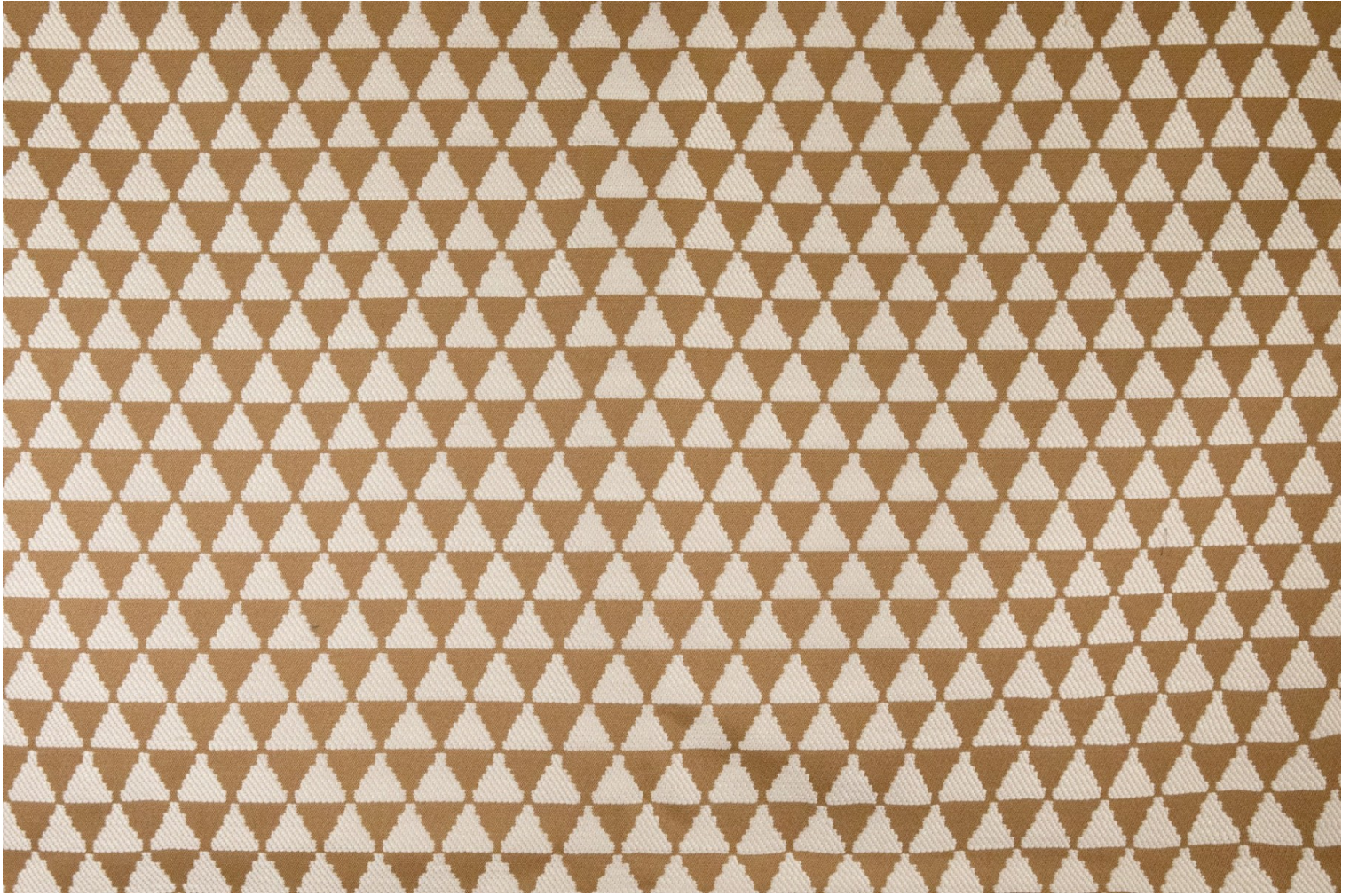
Martindale test	30 000 T
-----------------	----------

Weight / Linear metre	805 g
-----------------------	-------

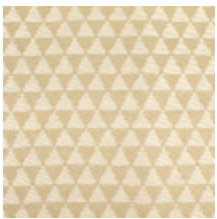
Fire rating	MI
-------------	----

LELIEVRE

PARIS



Available colours



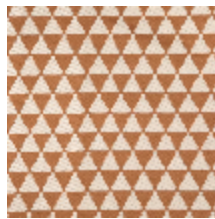
3265-01
KHAIMA - BEIGE



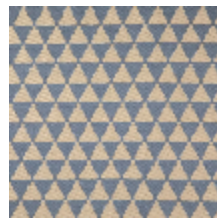
3265-02
KHAIMA - FICELLE



3265-03
KHAIMA - CAMEL



3265-04
**KHAIMA -
TERRACOTTA**



3265-05
**KHAIMA - GRIS
BLEU**



3265-06
**KHAIMA -
MARINE**

KHAIMA - CAMEL

3265-03

