

LELIEVRE

PARIS

KHAIMA M1 - GRIS BLEU

3265-05



KHAIMA (the Arabic word for the 'tent' traditionally used by nomads travelling in the desert) is the only high-performance material in the collection - a natural and soft touch polyester fabric. From beige to navy to terracotta, KHAIMA is available in six colourways that share the same earth-toned base woven with pyramid-shaped motifs. | Design: Tristan Auer

Collection NAJD

Brand LELIÈVRE

TECHNICAL DATA

Composition Polyester FR 100%

Width 141 cm

Repeat cut No

Vertical repeat 17 cm

Horizontal repeat 35 cm

Drop match No

Care    

Uses   

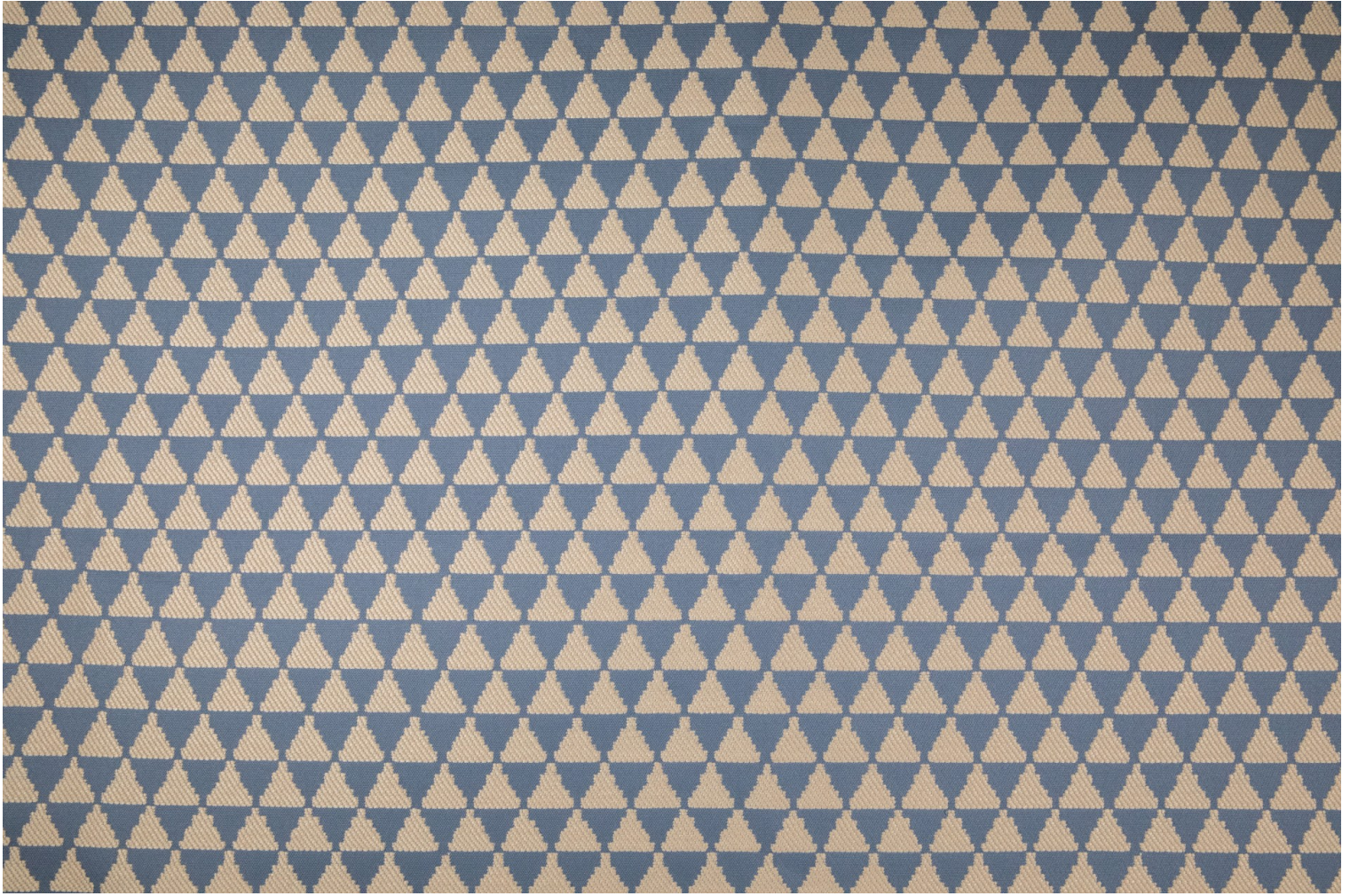
Martindale test 30 000 T

Weight / Linear metre 805 g

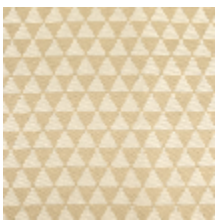
Fire rating M1

LELIEVRE

PARIS



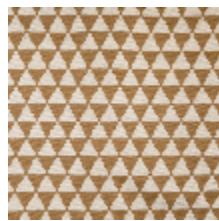
Available colours



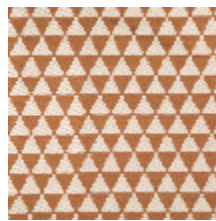
3265-01
**KHAIMA M1 -
BEIGE**



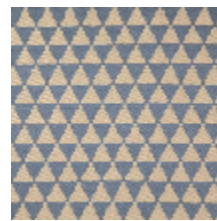
3265-02
**KHAIMA M1 -
FICELLE**



3265-03
**KHAIMA M1 -
CAMEL**



3265-04
**KHAIMA M1 -
TERRACOTTA**



3265-05
**KHAIMA M1 -
GRIS BLEU**



3265-06
**KHAIMA M1 -
MARINE**

KHAIMA M1 - GRIS BLEU

3265-05

