

**ODORICO - MOUTARDE**

3281-02

# LELIEVRE

PARIS



ODORICO is a Jacquard fabric featuring an Art Deco pattern imitating mosaic tiles with a pattern of extremely fine lines over an audacious black background. The design was reworked based on a detail from an archive drawing of Maison Leleu's historic Mosaïque rug. The chenille velvet thread creates a raised texture and gives the fabric a beautiful drape. It may also be used with other fabrics from the collection to bring the combination together and create a sense of harmony.

Collection **RÉTROSPECTIVES**

Brand **LELIEVRE**

## TECHNICAL DATA

Composition **Viscose 74% - Polyester 15% - Acrylic 11%**

Width **140 cm**

Repeat cut **No**

Vertical repeat **63 cm**

Horizontal repeat **35 cm**

Drop match **No**

Care 

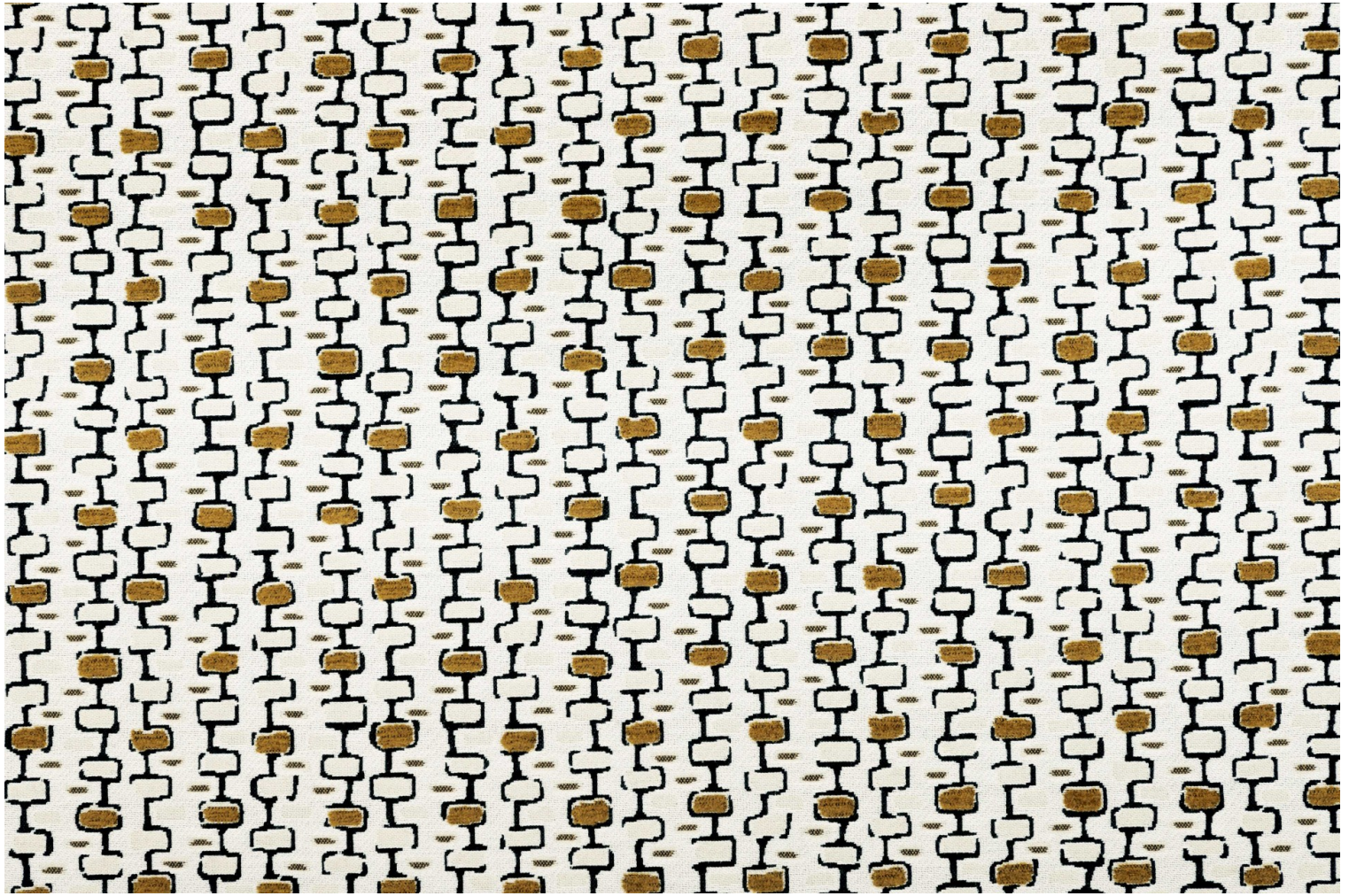
Uses 

Martindale test **20 000 T**

Weight / Linear metre **980 g**

# LELIEVRE

PARIS



## Available colours



3281-01  
**ODORICO -  
NATUREL**



3281-02  
**ODORICO -  
MOUTARDE**



3281-03  
**ODORICO -  
CARBONE**

**ODORICO - MOUTARDE**

3281-02

