

LELIEVRE

PARIS

KOMODO - LAQUE *

3433-05



The year of the Dragon. A magnificent technical interpretation showing the hand drawing of Jean Paul Gaultier on a high definition damask. This signed monochrome tattoo motif is available in six characteristic colours suitable for upholstery.

Collection	CA C'EST PARIS!
------------	-----------------

Brand	JEAN PAUL GAULTIER
-------	--------------------

TECHNICAL DATA

Composition	Cotton 78% - Polyamide 22%
-------------	----------------------------

Width	142 cm
-------	--------

Repeat cut	No
------------	----

Vertical repeat	92 cm
-----------------	-------

Drop match	No
------------	----

Care	  
------	---

Uses	   
------	---

Martindale test	40 000 T
-----------------	----------

Weight / Linear metre	497 g
-----------------------	-------

LELIEVRE

PARIS

Available colours



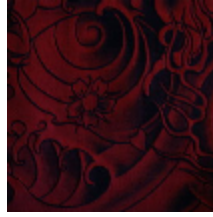
3433-01
**KOMODO -
GRAPHITE**



3433-02
KOMODO - BEIGE



3433-03
KOMODO - NUIT *



3433-04
**KOMODO -
NECTAR**



3433-05
**KOMODO -
LAQUE ***



3433-06
KOMODO - GOLD

LELIEVRE

PARIS

KOMODO - LAQUE *

3433-05

