

LELIEVRE

PARIS

KOMODO - GOLD

3433-06



The year of the Dragon. A magnificent technical interpretation showing the hand drawing of Jean Paul Gaultier on a high definition damask. This signed monochrome tattoo motif is available in six characteristic colours suitable for upholstery.

Collection CA C'EST PARIS!

Brand JEAN PAUL GAULTIER

TECHNICAL DATA

Composition Cotton 78% - Polyamide 22%

Width 142 cm

Repeat cut No

Vertical repeat 92 cm

Drop match No

Care 

Uses 

Martindale test 40 000 T

Weight / Linear metre 497 g

LELIEVRE

PARIS

Available colours



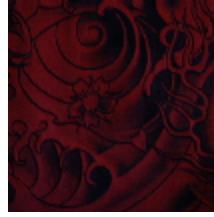
3433-01
**KOMODO -
GRAPHITE**



3433-02
KOMODO - BEIGE



3433-03
KOMODO - NUIT *



3433-04
**KOMODO -
NECTAR**



3433-05
**KOMODO -
LAQUE ***



3433-06
KOMODO - GOLD

LELIEVRE

PARIS

KOMODO - GOLD

3433-06

