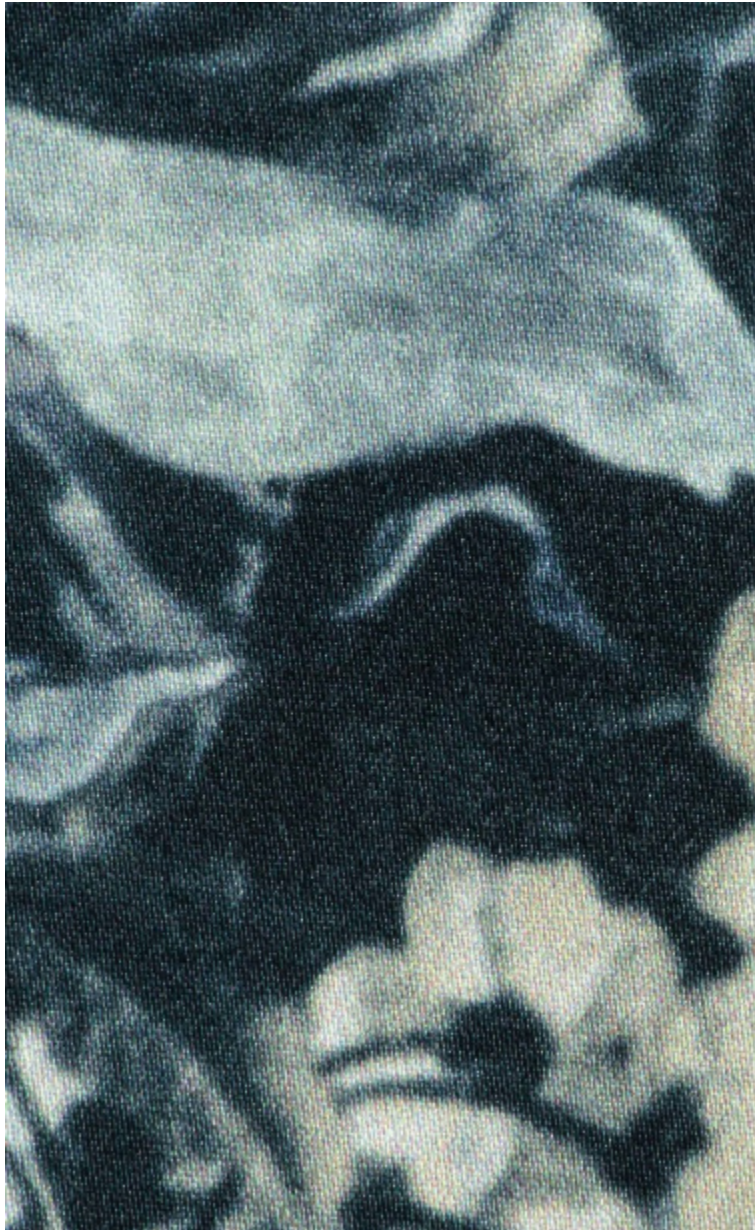


LELIEVRE

PARIS

BOTANIQUE - SABLE

3459-04



A beautiful printed satin cotton refines these exuberant flowers and allows us to share their Rococo romanticism for upholstery or curtains.

Collection	NATURE ET DECOUVERTE
------------	----------------------

Brand	JEAN PAUL GAULTIER
-------	--------------------

TECHNICAL DATA

Composition	Cotton 100%
-------------	-------------

Width	140 cm
-------	--------

Repeat cut	No
------------	----

Vertical repeat	114 cm
-----------------	--------

Horizontal repeat	70 cm
-------------------	-------

Drop match	No
------------	----

Care	   
------	---

Uses	   
------	---

Martindale test	35 000 T
-----------------	----------

Weight / Linear metre	308 g
-----------------------	-------

LELIEVRE

PARIS



Available colours



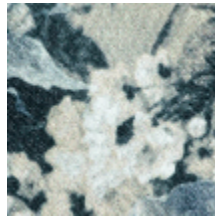
3459-01
**BOTANIQUE -
BLEUET**



3459-02
**BOTANIQUE -
POLLEN**



3459-03
**BOTANIQUE -
LAQUE**



3459-04
**BOTANIQUE -
SABLE**

BOTANIQUE - SABLE

3459-04

