

LELIEVRE

PARIS

ST JEAN DE LUZ - CHATAIGNE *

3461-03



A supple jacquard fabric inspired by the Basque Country courtesy of Jean Paul Gaultier, the checked design and colors are simple yet sophisticated for light upholstery and curtains.

Collection **NATURE ET DECOUVERTE**

Brand **JEAN-PAUL GAULTIER**

TECHNICAL DATA

Composition **Viscose 54% - Cotton 37% - Polyamide 9%**

Width **145 cm**

Repeat cut **No**

Vertical repeat **75 cm**

Horizontal repeat **72 cm**

Drop match **No**

Care 

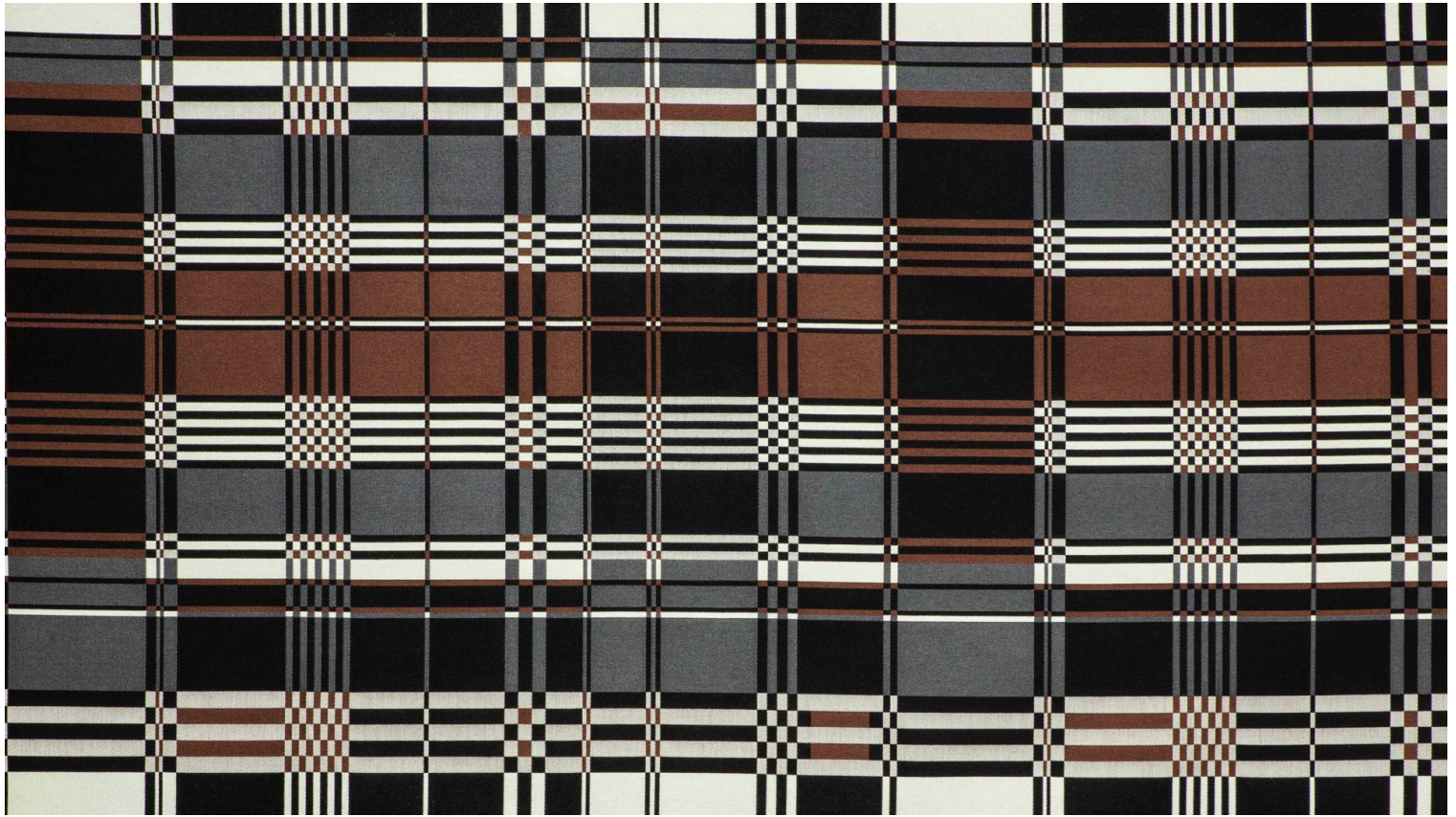
Uses 

Martindale test **25 000 T**

Weight / Linear metre **761 g**

LELIEVRE

PARIS



Available colours



3461-01
**ST JEAN DE LUZ -
PETROLE**



3461-02
**ST JEAN DE LUZ -
POLLEN ***



3461-03
**ST JEAN DE LUZ -
CHATAIGNE ***



3461-04
**ST JEAN DE LUZ -
LAQUE**



3461-05
**ST JEAN DE LUZ -
CIEL**

ST JEAN DE LUZ - CHATAIGNE *

3461-03

