

LELIEVRE

PARIS

BIARRITZ - POLLEN *

3462-03



To coordinate with the Basque spirit of St Jean de Luz, this is another versatile jacquard fabric with a checkerboard design, also suitable for light upholstery and curtains.

Collection	NATURE ET DECOUVERTE
------------	----------------------

Brand	JEAN PAUL GAULTIER
-------	--------------------

TECHNICAL DATA

Composition	Viscose 64% - Cotton 36%
-------------	--------------------------

Width	139 cm
-------	--------

Repeat cut	No
------------	----

Drop match	No
------------	----

Care	   
------	---

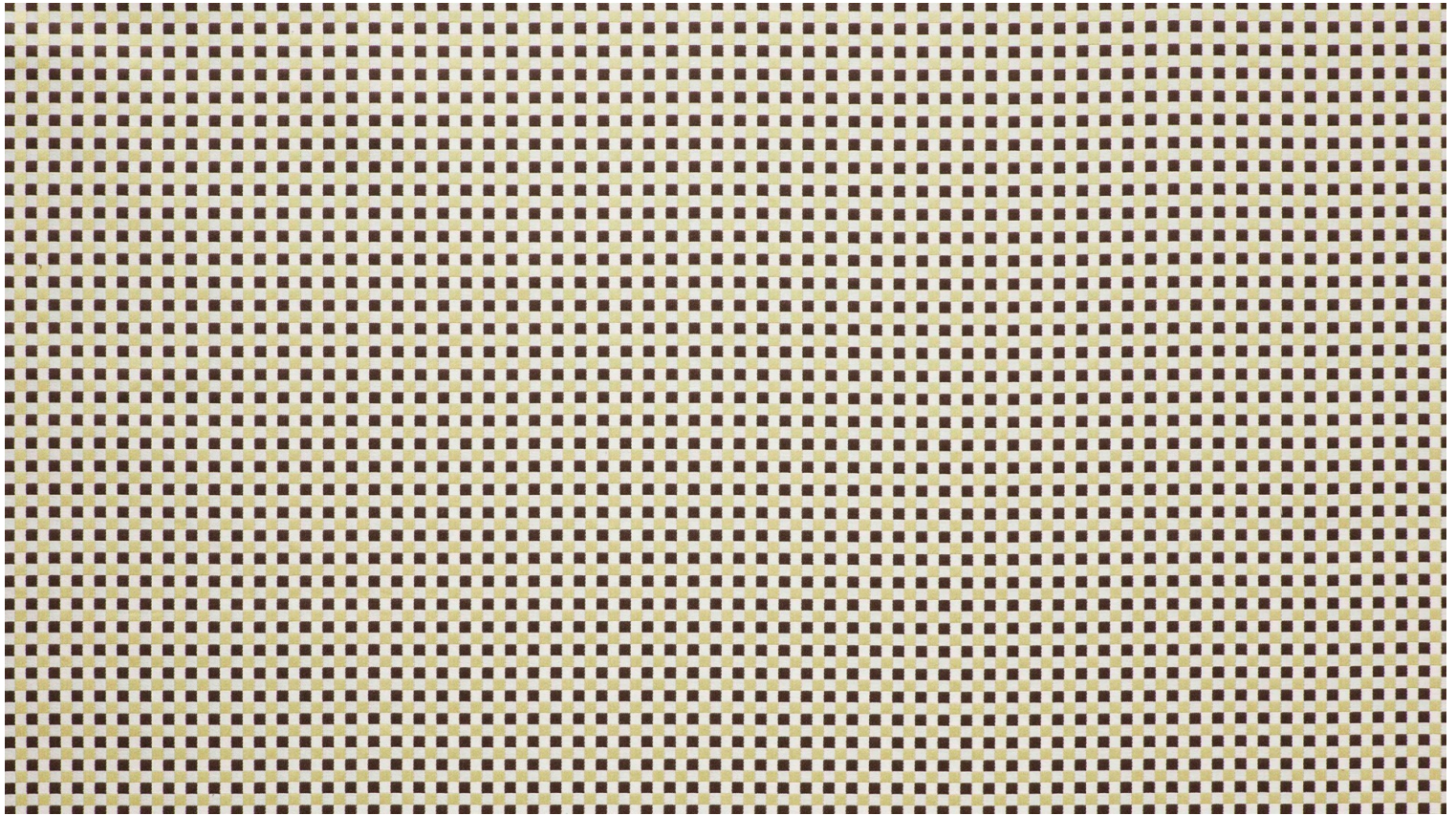
Uses	   
------	---

Martindale test	20 000 T
-----------------	----------

Weight / Linear metre	625 g
-----------------------	-------

LELIEVRE

PARIS



Available colours



3462-02
**BIARRITZ -
ANTHRACITE ***



3462-03
**BIARRITZ -
POLLEN ***



3462-04
**BIARRITZ - BRUN



3462-06
**BIARRITZ -
CORAIL ***



3462-07
**BIARRITZ -
PETROLE ***



3462-08
BIARRITZ - CIEL *



3462-09
BIARRITZ - KAKI *

LELIEVRE

PARIS

BIARRITZ - POLLEN *

3462-03

