

# LELIEVRE

PARIS

## BIARRITZ - BRUN \*

3462-04



To coordinate with the Basque spirit of St Jean de Luz, this is another versatile jacquard fabric with a checkerboard design, also suitable for light upholstery and curtains.

Collection **NATURE ET DECOUVERTE**

Brand **JEAN-PAUL GAULTIER**

### TECHNICAL DATA

Composition **Viscose 64% - Cotton 36%**

Width **139 cm**

Repeat cut **No**

Drop match **No**

Care 

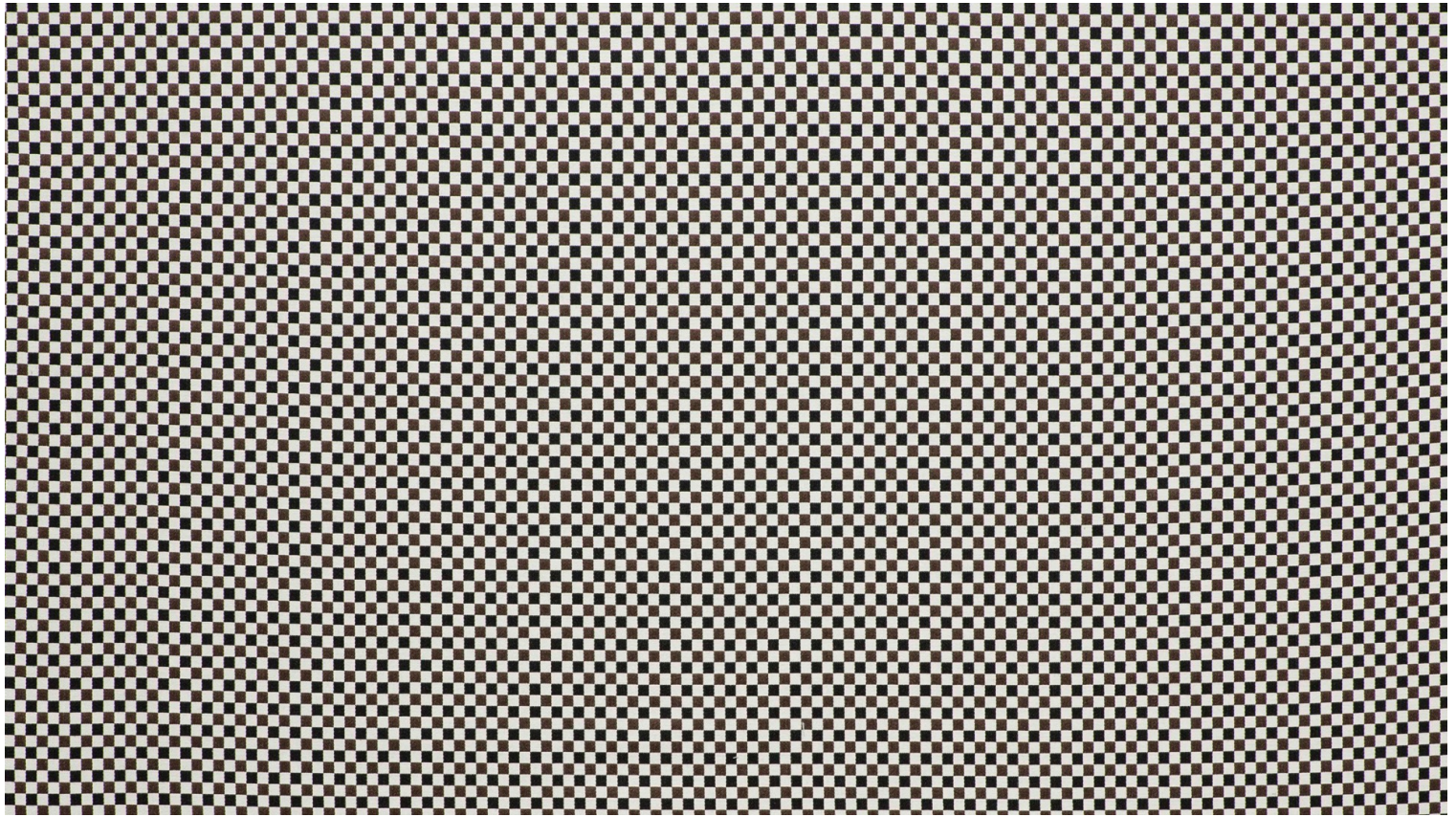
Uses 

Martindale test **20 000 T**

Weight / Linear metre **625 g**

# LELIEVRE

PARIS



## Available colours



3462-01  
**BIARRITZ - TAUPE**  
\*



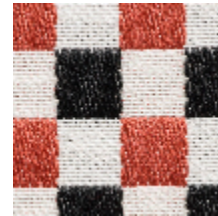
3462-02  
**BIARRITZ - ANTHRACITE** \*



3462-03  
**BIARRITZ - POLLEN** \*



3462-04  
**BIARRITZ - BRUN**  
\*



3462-06  
**BIARRITZ - CORAIL** \*



3462-07  
**BIARRITZ - PETROLE** \*



3462-08  
**BIARRITZ - CIEL** \*



3462-09  
**BIARRITZ - KAKI** \*

# LELIEVRE

PARIS

**BIARRITZ - BRUN \***

3462-04

