

LELIEVRE

PARIS

BIARRITZ - CORAIL *

3462-06



To coordinate with the Basque spirit of St Jean de Luz, this is another versatile jacquard fabric with a checkerboard design, also suitable for light upholstery and curtains.

Collection **NATURE ET DECOUVERTE**

Brand **JEAN PAUL GAULTIER**

TECHNICAL DATA


Composition **Viscose 64% - Cotton 36%**

Width **139 cm**

Repeat cut **No**

Drop match **No**

Care    

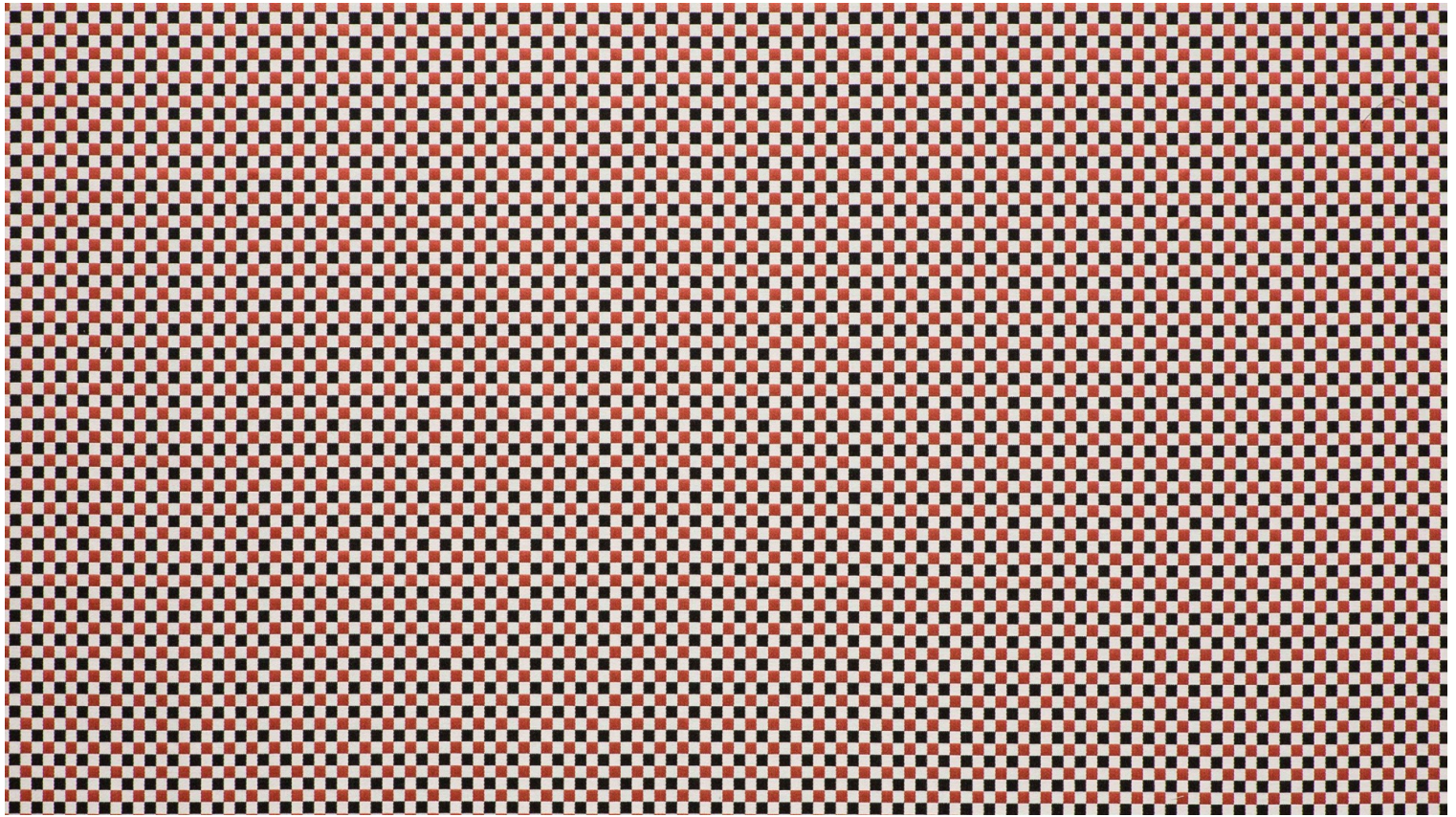
Uses    

Martindale test **20 000 T**

Weight / Linear metre **625 g**

LELIEVRE

PARIS



Available colours



3462-02
BIARRITZ - ANTHRACITE *



3462-03
BIARRITZ - POLLEN *



3462-04
BIARRITZ - BRUN *



3462-06
BIARRITZ - CORAIL *



3462-07
BIARRITZ - PETROLE *



3462-08
BIARRITZ - CIEL *



3462-09
BIARRITZ - KAKI *

LELIEVRE

PARIS

BIARRITZ - CORAIL *

3462-06

