

LELIEVRE

PARIS

OBI - NOIR

3467-01



On a small piece of jacquard, a spring flower, discreet and miniaturised, plays the false plain with tenderness, as indispensable as the Obi, the belt centrepiece of the traditional kimono.

Collection **VOYAGES VOYAGES**

Brand **JEAN-PAUL GAULTIER**

TECHNICAL DATA

Composition **Cotton 58% - Viscose 42%**

Width **135 cm**

Repeat cut **No**

Vertical repeat **8 cm**

Horizontal repeat **8 cm**

Drop match **No**

Care 

Uses 

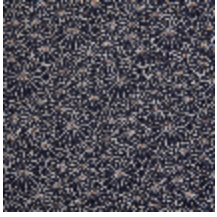
Martindale test **25 000 T**

Weight / Linear metre **535 g**

LELIEVRE

PARIS

Available colours



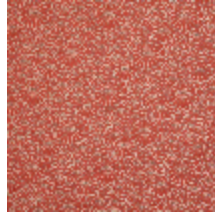
3467-01
OBI - NOIR



3467-02
OBI - NATUREL



3467-03
OBI - DORE



3467-04
OBI - BRIQUE *



3467-05
OBI - AMANDE



3467-07
OBI - CIEL



3467-08
OBI - MARINE

LELIEVRE

PARIS

OBI - NOIR

3467-01

