

LELIEVRE

PARIS

OBI - DORE

3467-03



On a small piece of jacquard, a spring flower, discreet and miniaturised, plays the false plain with tenderness, as indispensable as the Obi, the belt centrepiece of the traditional kimono.

Collection VOYAGES VOYAGES

Brand JEAN PAUL GAULTIER

TECHNICAL DATA

Composition Cotton 58% - Viscose 42%

Width 135 cm

Repeat cut No

Vertical repeat 8 cm

Horizontal repeat 8 cm

Drop match No

Care 

Uses 

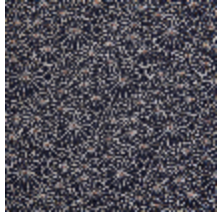
Martindale test 25 000 T

Weight / Linear metre 535 g

LELIEVRE

PARIS

Available colours



3467-01
OBI - NOIR



3467-02
OBI - NATUREL



3467-03
OBI - DORE



3467-05
OBI - AMANDE



3467-07
OBI - CIEL



3467-08
OBI - MARINE

OBI - DORE

3467-03

