

**OBI - MARINE**

3467-08



On a small piece of jacquard, a spring flower, discreet and miniaturised, plays the false plain with tenderness, as indispensable as the Obi, the belt centrepiece of the traditional kimono.

Collection **VOYAGES VOYAGES**

Brand **JEAN PAUL GAULTIER**

## TECHNICAL DATA

Composition **Cotton 58% - Viscose 42%**

Width **135 cm**

Repeat cut **No**

Vertical repeat **8 cm**

Horizontal repeat **8 cm**

Drop match **No**

Care 

Uses 

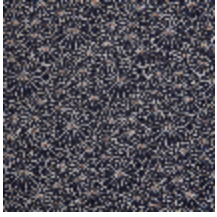
Martindale test **25 000 T**

Weight / Linear metre **535 g**

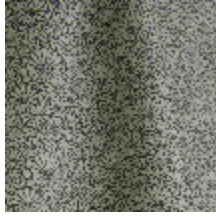
# LELIEVRE

PARIS

## Available colours



3467-01  
**OBI - NOIR**



3467-02  
**OBI - NATUREL**



3467-03  
**OBI - DORE**



3467-05  
**OBI - AMANDE**



3467-07  
**OBI - CIEL**



3467-08  
**OBI - MARINE**

**OBI - MARINE**

3467-08

